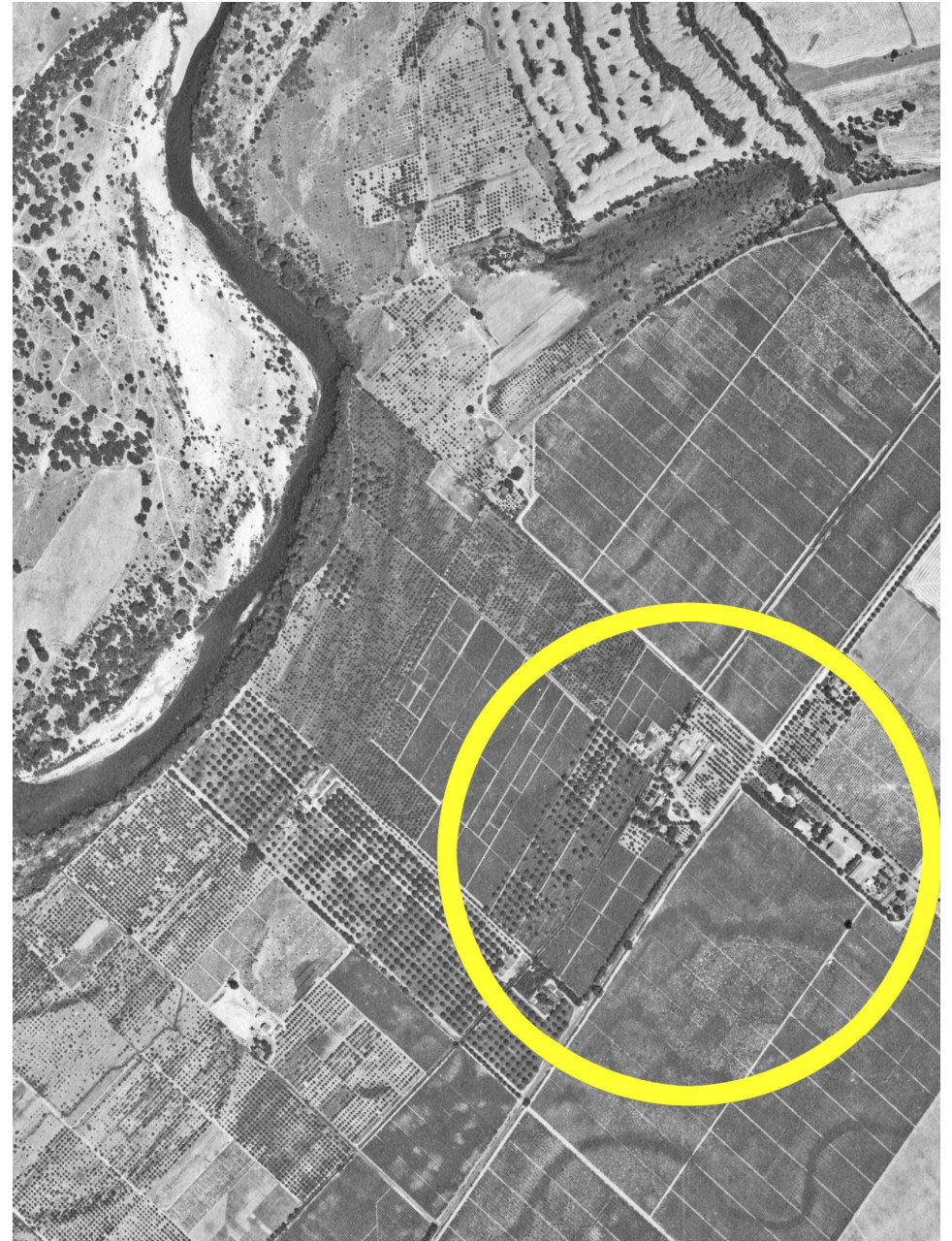




WILLIAMSON PARCELS

COMMUNITY DESIGN WORKSHOP



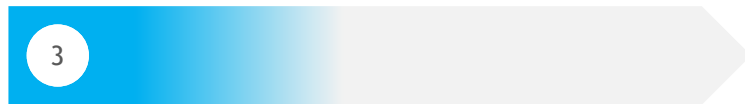
Introductions



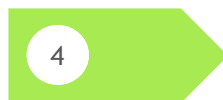
Roadmap



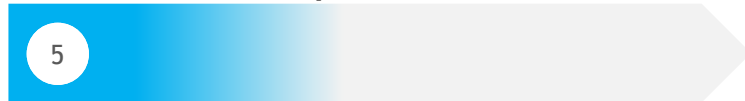
Review What We've Heard



Tree Evaluation



Present Concepts



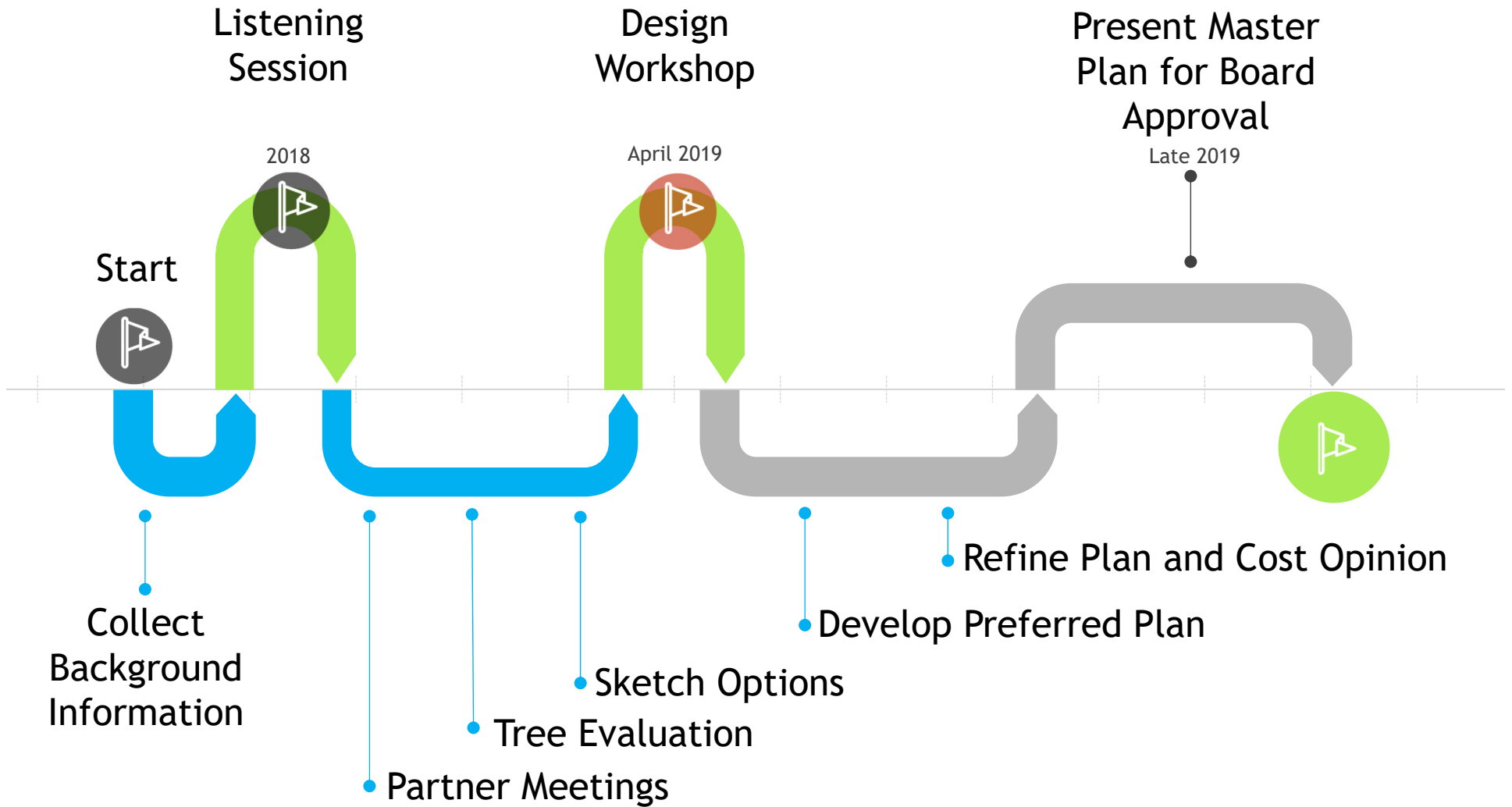
Discussion & Preference Activity



Wrap-Up



AGENDA



PROCESS ROADMAP



LISTENING SESSION

WHAT WE HEARD

- **Consensus desire for PASSIVE uses**
- **Interest in demonstration gardens**
 - **Low water use**
 - **Sensory plant areas**
 - **Pollinator attractors**
- **Interest in Community Gardening**

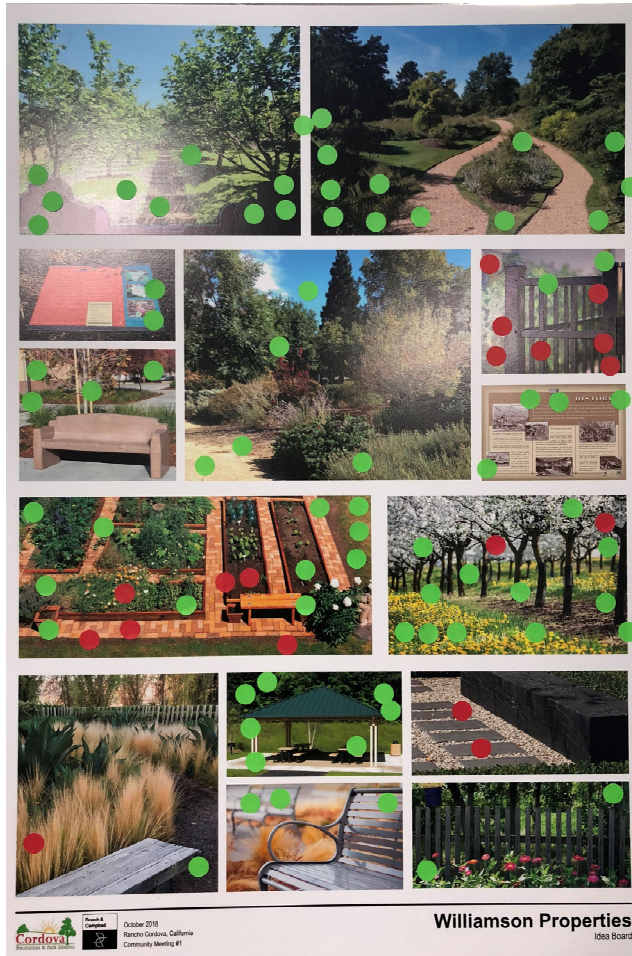
LISTENING SESSION

WHAT WE HEARD

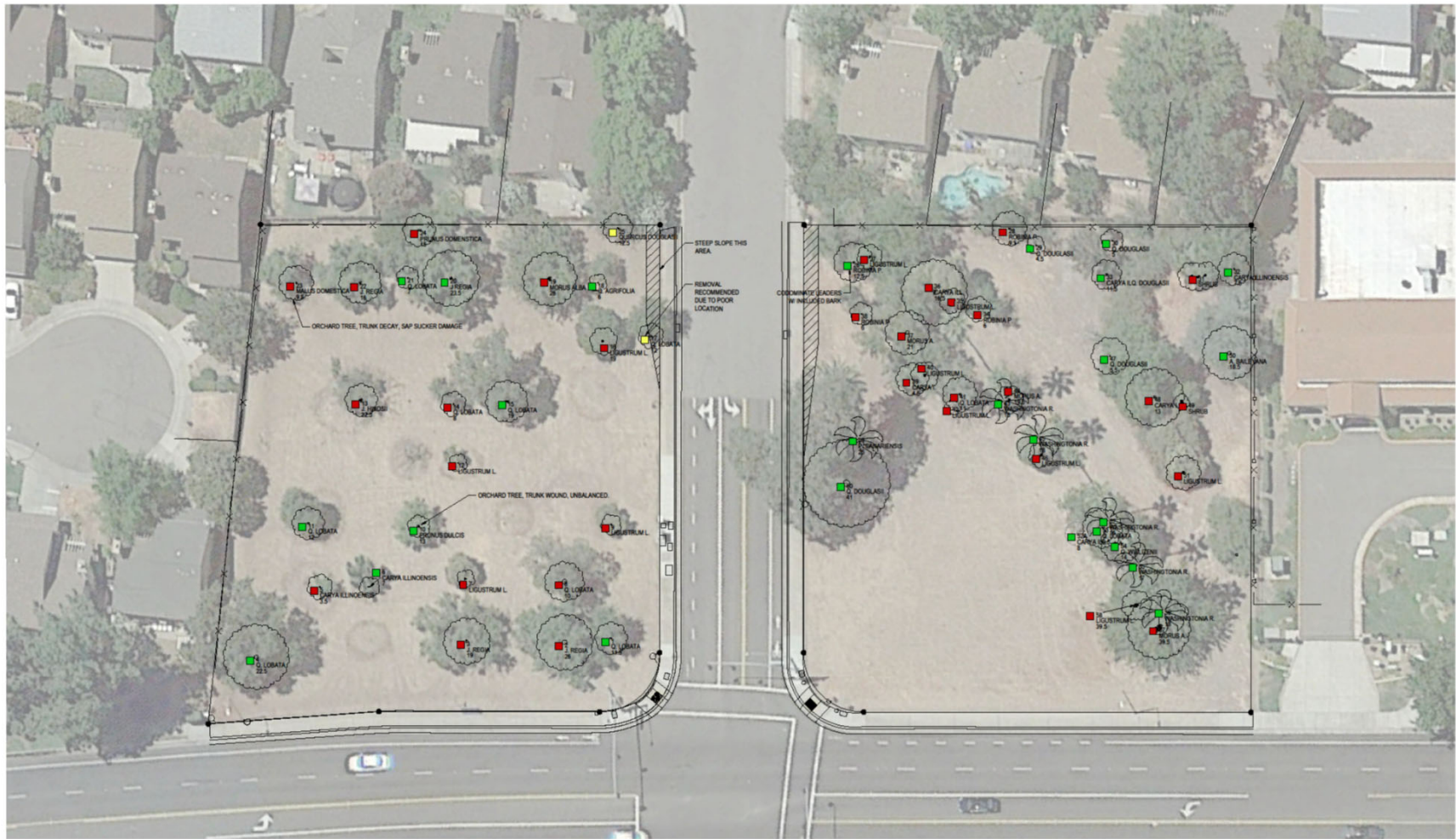
- **Questions about fencing**
 - **Perimeter?**
 - **Any other fencing?**
- **Questions about funding**
 - **Partner and Volunteer opportunities**
 - **Long-term maintenance will be performed by CRPD**
- **Concerns about Visibility & Vagrancy**

LISTENING SESSION

VISUAL PREFERENCE SURVEY



LISTENING SESSION



March 2018
 Rancho Cordova, California
 Preliminary Concepts

Williamson Properties
 Tree Evaluation (Lori Murphy)

TREE EVALUATION



DESIGN OPTIONS



DESIGN CONCEPT 'A'



DESIGN CONCEPT 'B'



DESIGN CONCEPT 'C'



Decomposed Granite Pathway



Signage



Metal Fencing



Split Rail Fencing



Timber Framed Arbor



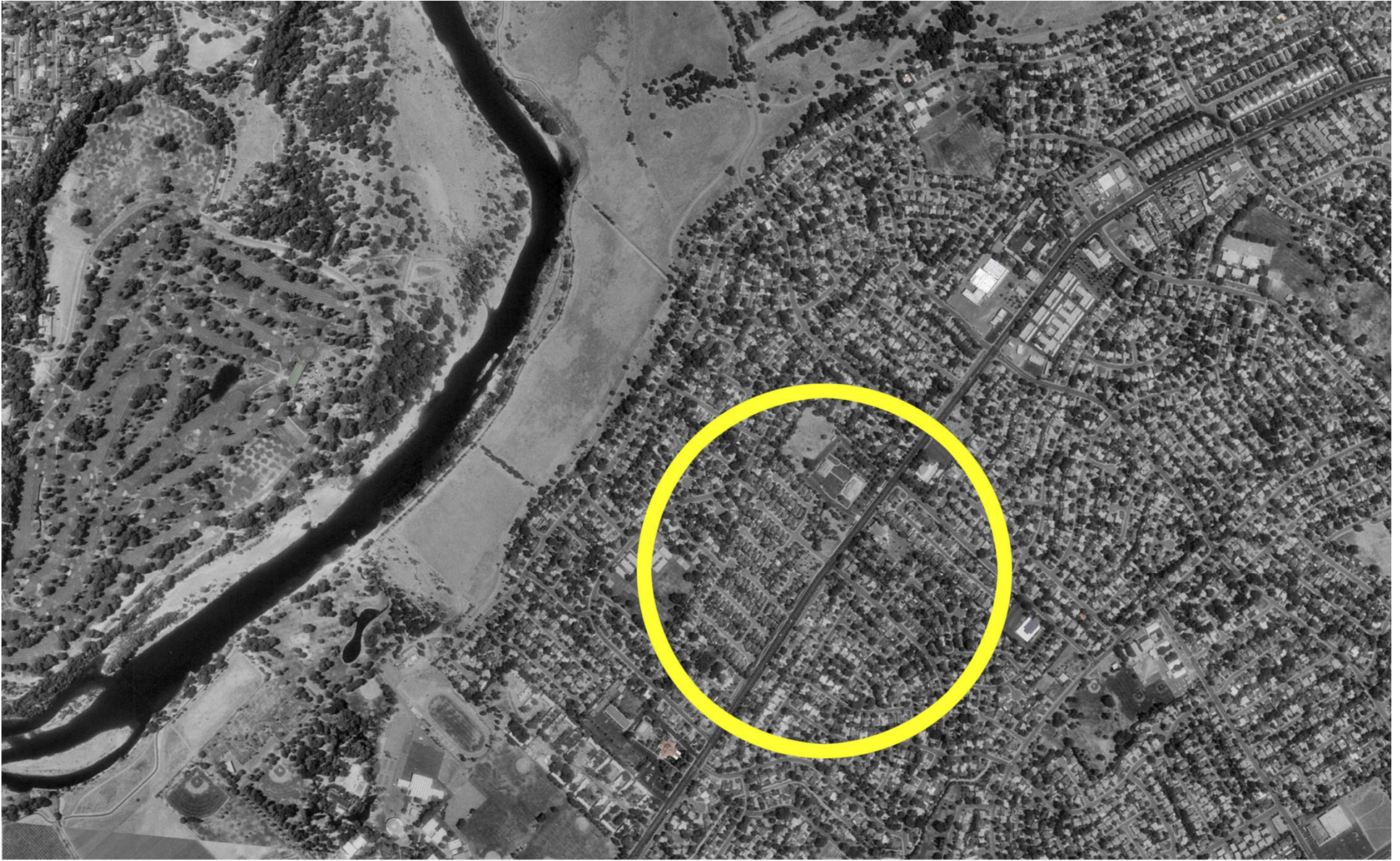
Metal Arbor



Examples of Masonry Walls



REPRESENTATIVE IMAGES



NEXT STEPS & WRAP-UP

THANK YOU!



**Please send additional
questions and comments to:
cjames@crpd.com**