

CORDOVA RECREATION & PARK DISTRICT OPTIMIZED PLAN

Board of Directors

August 17, 2022



www.crpdp.com/OptimizedPlan



AGENDA

MEETING PURPOSE: To introduce the Optimized Plan, planning process and project schedule.

1. INTRODUCTIONS

2. ABOUT THE PROJECT

- a. Intent
- b. Purpose
- c. Process & Timeline

3. COMMUNITY ENGAGEMENT

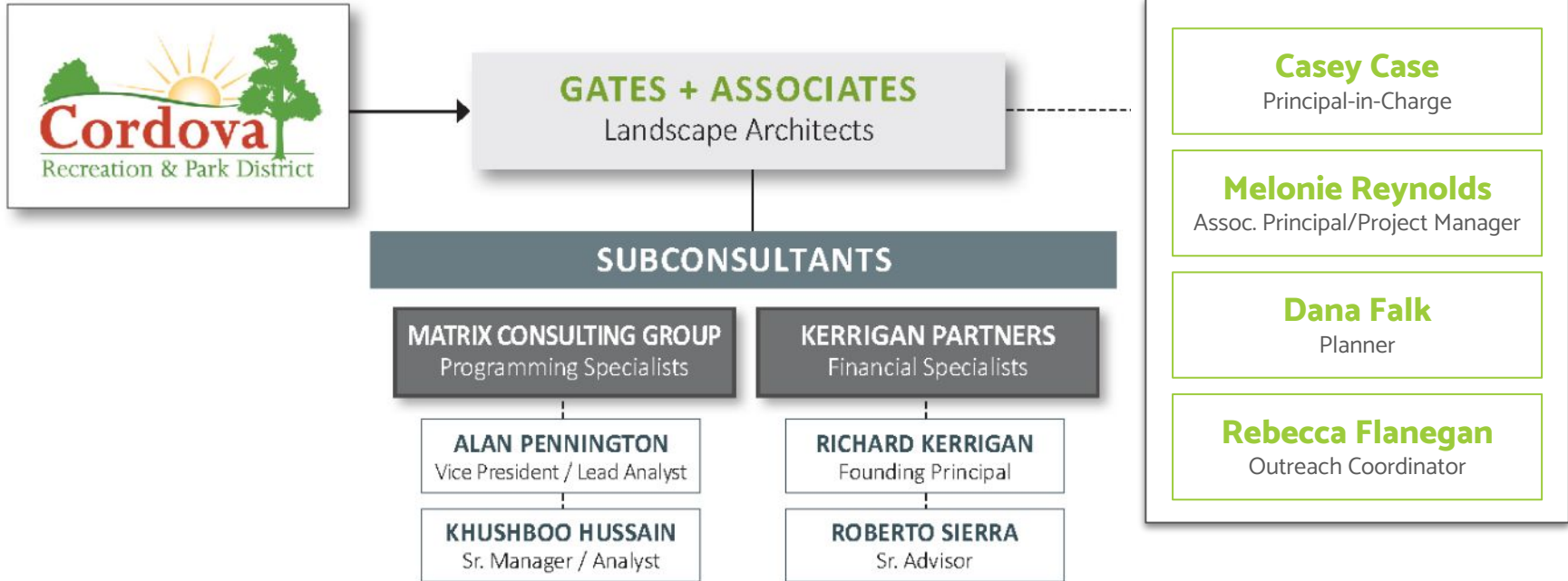
4. NEXT STEPS

5. QUESTIONS & COMMENTS





INTRODUCTIONS





ABOUT THE PROJECT

What is an OPTIMIZED PLAN?

An **Optimized Plan** is a **concise, user friendly, actionable document** that provides **guidance** for CRPD over the next 10+ years.

The plan will determine **current and future residents' needs** in order to ensure **equitable access** to CRPD's parks, facilities, programs, services and recreational opportunities.





ABOUT THE PROJECT

INTENT

CRPD Mission:

Lead the region in recreation and parks through **excellence and transparency** in serving the needs of our **diverse and growing community**.

CRPD Vision:

Empower and engage community pride by being safe, responsive, accessible, innovative and sustainable.

SAFE

Strengthen and elevate the vitality of our community through well-maintained and secure public spaces.

RESPONSIVE

Initiate meaningful collaboration and communication with integrity to foster stewardship and trust.

ACCESSIBLE

Develop inclusive environments to cultivate participation and interaction.

INNOVATIVE

Advance skills and incorporate modern trends and ideas to identify better solutions.

SUSTAINABLE

Protect current District resources while providing for future generations.



ABOUT THE PROJECT

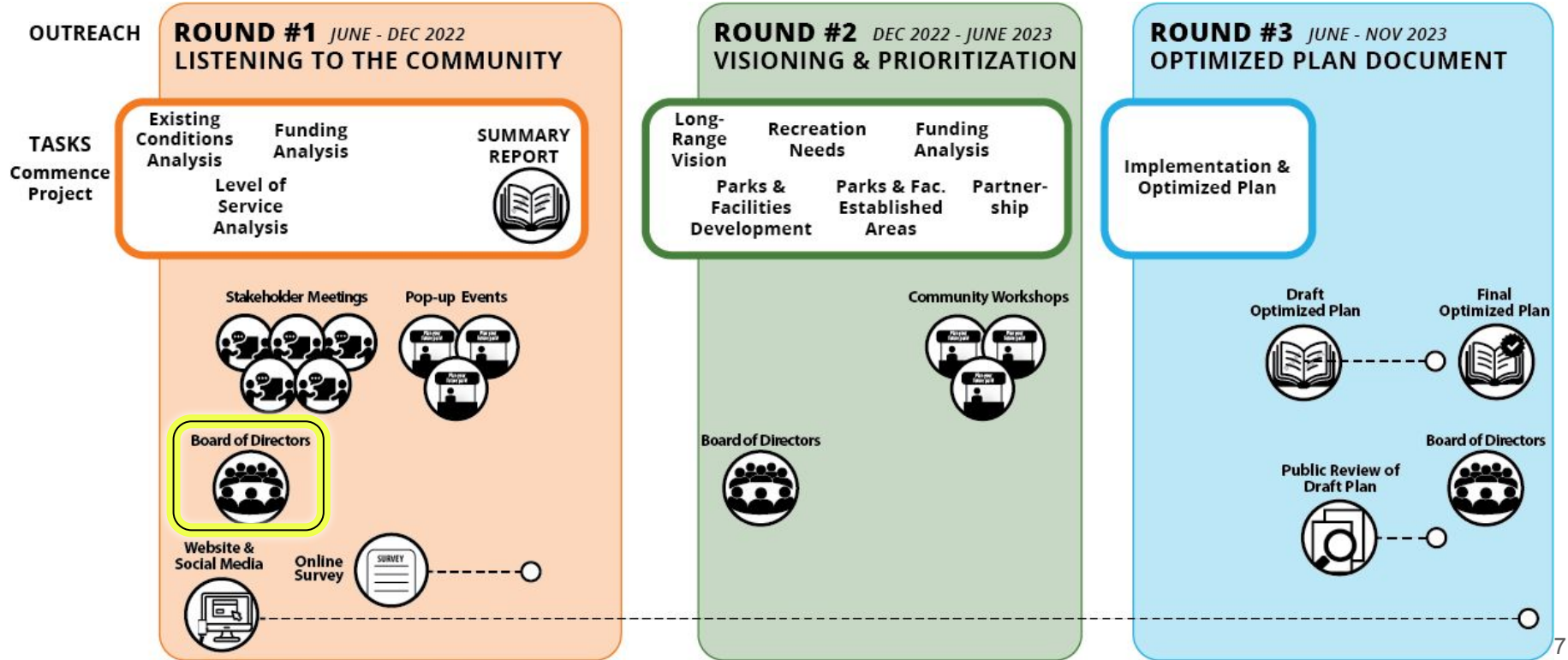
PURPOSE

- Develop a **forward-looking, implementable plan** that reflects public desires, establishes a compelling vision and guides CRPD for the next 10+ years
- Empower and motivate District residents to participate in the planning process through **robust community engagement**
- Conduct a comprehensive **Needs Assessment** that accurately reflects CRPD's growing & increasingly diverse population and evaluates the 2014 approved Level of Service (LOS)
- Evaluate and prioritize implementation of **proposed facilities and opportunity sites**
- Realistically address **capital and maintenance funding** available in CRPD's different district areas
- Craft recommended actions to achieve synchronization with **Land Authority Policies, California Environmental Quality Act (CEQA) requirements, and Climate Action Mandates.**



ABOUT THE PROJECT

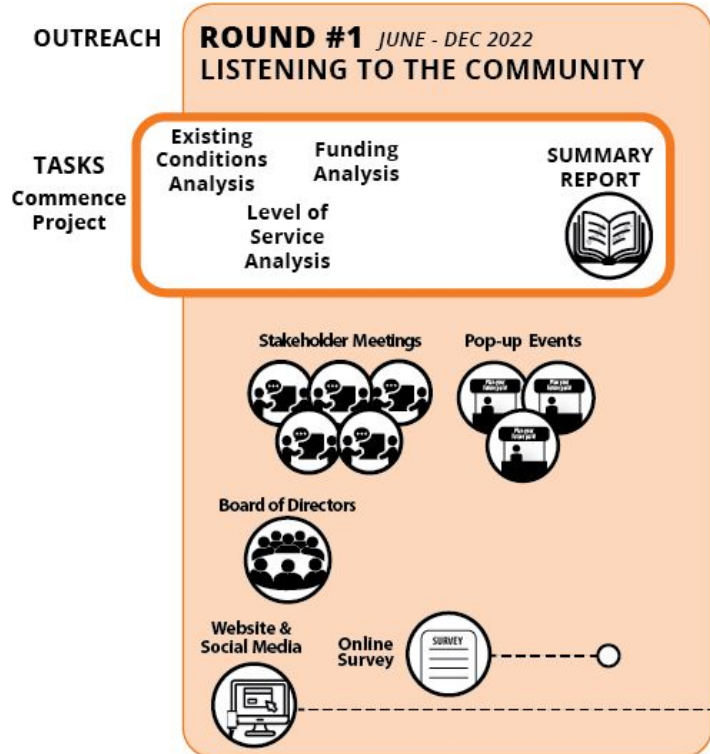
PROCESS & TIMELINE





ABOUT THE PROJECT

PROCESS



LISTENING TO THE COMMUNITY

- Existing Conditions Analysis
- Level of Service Analysis
- Funding Analysis
- Summary Report



ABOUT THE PROJECT

PROCESS LISTENING TO THE COMMUNITY

EXISTING CONDITIONS

ACCESSIBILITY

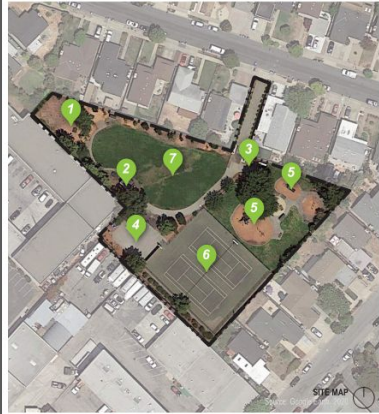
- No ADA accessible benches.
- Paved areas and paths needs to be evaluated.

AMENITY

- Wood benches are in fair condition.
- BBQ in poor condition.
- Restroom is new and in good condition.
- Horseshoe pits are in poor condition and underutilized.
- Tennis courts resurfaced in 2022.

LANDSCAPE

- Lawn is in fair condition.
- Trees around perimeter of site are in fair condition.
- Planting areas are bare.
- Pear trees near playground require trimming.
- Ivy needs removal by picnic areas.
- Large oak needs removal.
- Planting near entrance in good condition.



NEIGHBORHOOD PARK TIER 2

- ✓ Tier 1 Requirements
- ✓ Play Amenity
- ✓ Picnic Opportunity
- ✓ Multi-Use Flexible Space
- ✓ Recreation Amenity

- Picnic and Horseshoe Area
- Restroom, Permanent
- Planting Area
- Basketball, Half Court
- Playground
- Tennis Courts
- Multi-purpose Lawn

Current Level of Service (LOS) Ratios

Park Element	Arden Park District
Community Center	1 for 4,864 people
Pool	1 for 4,864 people
Softball Diamond	1 for 4,864 people
Rectangular Field	1 for 4,864 people
Basketball Court	1 for 3,242 people
Tennis Court	1 for 1,216 people
Playground	1 for 1,216 people
Picnic Area, Reservable with BBQ	1 for 1,216 people
Restrooms	1 for 2,432 people

Table 3-2: Current Level of Service Ratios

Comparison Level of Service (LOS) Ratios

Park Element	Mission Oaks	Fulton - El Camino	NRPA Jurisdiction ¹
Community Center	1: 34,989	18,501	8,504
Pool	1: 69,978	37,001	8,637
Softball Diamond	1: 34,989	12,334	5,503
Rectangular Field	1: 13,996	9,250	3,933
Basketball Court	1: 17,495	12,334	3,750
Tennis Court	1: 4,665	3,700	2,723
Playground	1: 4,374	3,364	1,986
Picnic Area, Reservable with BBQ	1: 17,495	3,083	--
Restrooms	1: 13,996	9,250	--

¹: Jurisdictions serving less than 20,000 people, 2022 data

Table 3-3: Comparison Level of Service Ratios

LOS Ratio Comparison Graphic

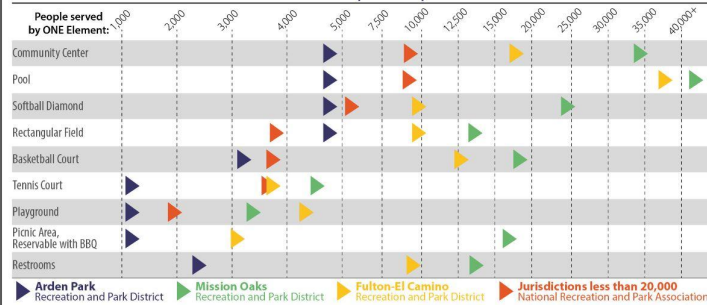


Figure 3-5: Level of Service (LOS) Ratio Comparison Graphic

BENCHMARKED AMENITY	IDEAL AMENITY RATIOS		AMOUNT OF ONE AMENITY PER 1,000 PEOPLE	
	RESIDENTS SERVED	ITEM	% SINGLE AMENITY	PEOPLE
All-Abilities Playground	26,500	:1	4%	:1,000
Basketball Court (Full)	2,000	:1	49%	:1,000
Basketball Court (Half)	4,400	:1	23%	:1,000
Multi-Use Athletic Field	2,000	:1	49%	:1,000
Play Element	8,800	:1	11%	:1,000
Playground	1,500	:1	68%	:1,000
Reservable Picnic Area, Small	6,600	:1	15%	:1,000
Reservable Picnic Area, Large	8,800	:1	11%	:1,000
Tennis Court	4,400	:1	23%	:1,000
PRIORITY AMENITY				
Community Garden	8,800	:1	11%	:1,000
Dog Park	13,200	:1	8%	:1,000
Dog Parklet	13,200	:1	8%	:1,000
Pump Track (Bike Park)	26,500	:1	4%	:1,000
Skate Park	26,500	:1	4%	:1,000
Water Play, Pool	26,500	:1	4%	:1,000
Water Play, Spray Park	26,500	:1	4%	:1,000
SECONDARY AMENITY				
Fitness Equipment Cluster	13,200	:1	8%	:1,000
Handball Court / Wall Ball	6,600	:1	15%	:1,000
Horseshoe Pit / Bocce Ball Court	6,600	:1	15%	:1,000
Outdoor Classroom	26,500	:1	4%	:1,000
Performance Space	13,200	:1	8%	:1,000
Teen Outdoor Space	8,800	:1	11%	:1,000

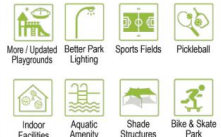
Table 3-4: Ideal Amenity Ratios

ROUND 1 ENGAGEMENT SUMMARY

What Do You Like?



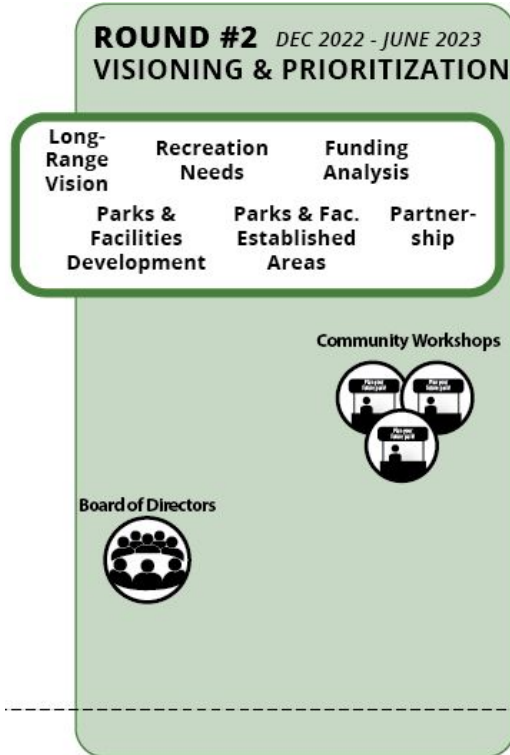
What Are Our Priorities?





ABOUT THE PROJECT

PROCESS



VISIONING & PRIORITIZATION

- Long-Range Vision
- Parks & Facilities Development
- Recreation Needs
- Parks & Facilities Established Areas
- Funding Analysis
- Partnership



ABOUT THE PROJECT

PROCESS VISIONING & PRIORITIZATION

MILPITAS PARKS AND RECREATION MASTER PLAN

MISSION

The City of Milpitas Recreation and Community Services Department's mission is to enrich our community through exceptional programs and services. Our vision is a Milpitas where all residents have access to excellent, affordable, innovative and well-run recreation activities, programs, facilities and community services. Our work encourages cultural unity and hometown pride, creates a sense of place, supports economic development, promotes health and wellness, fosters human development, addresses important social service needs and adds fun to the lives of those who live and work in Milpitas.

VISION

Create, enhance and sustain a comprehensive, connected system of parks and recreation programs that nurtures and inspires the Milpitas Community.

GOALS

- Strategically Grow Park and Rec System
- Create an Inclusive Parks System
- Enhance Equitable Access
- Provide Community Health & Wellness
- Reflect Milpitas' Cultural Diversity
- Expand Partnerships
- Advance Management & Stewardship
- Utilize Diverse Funding

Goals

At the outset of the Master Plan update, four guiding principles were identified by the District to direct the planning process. The guiding principles were the foundation for the Master Plan update vision.

Guiding Principles:

- Inclusive
- For all ages, abilities, and interests
- "right-sized"
- Adapt and Flex spaces

VISION

Provide the Arden Park Recreation and Park District a path forward with a community-derived, "right-sized," & implementable plan that guides decision-making for inclusive future improvements and adaptable flex space for users of all ages, abilities, and interests.

COMMUNITY

Foster neighborhood and community gathering by providing spaces that encourage social interaction and public amenities for District events and neighborhood meetups.

QUALITY

Provide safe, clean, and beautiful parks and right-sized facilities that support recreation and leisure activities to enrich quality of life for all residents.

GREEN

Operate sustainably with professional management, maintenance, and operations of parks and facilities using resilient and innovative practices that respect the environment.

USES

Continue to support diverse passive and active park and recreation uses, flexible and adaptable spaces and elements for all ages and abilities, and stewardship of shared community resources.

Arden Park
Recreation and Park District
Master Plan Update

01	Public agencies	<ol style="list-style-type: none"> Federal State County/School (local &/or match for 1 & 2)
02	Private (developers)	<ol style="list-style-type: none"> Traffic impact fees Utility impact fees Donations/community benefits
03	District property (private)	<ol style="list-style-type: none"> Community Facility District (CFD) Enhanced Infra. Finance District (EIFD) Assessment District (AD) Business Improvement District (BID)
04	Sales	<ol style="list-style-type: none"> Sales tax Hotel tax Tax exchange agreements (annexation)
05	Users	<ol style="list-style-type: none"> User fees e.g. memberships etc. Parking fees Commercial & retail
06	Partnerships	<ol style="list-style-type: none"> Public-private partnerships (delivery) Sponsorship & naming rights User groups, clubs, non-profit org

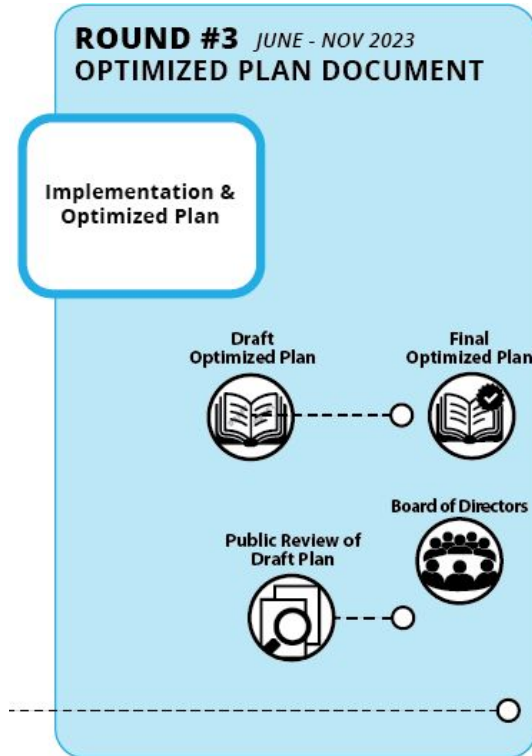
PARK SITE PRIORITIZATION RANKINGS *

SITE (PARK + JUA)	AVG POINTS ¹	SITE RANK
Opportunity: Ralston + Old County ¹	21.9	1
Opportunity: Oak Knoll Dr	18.8	2
Ralston Ranch	18.0	3
Opportunity: Alameda de las Pulgas	17.4	4
Alexander	14.5	5
O'Donnell	12.2	6
Hidden Canyon	12.0	7
Belameda	11.5	8
Twin Pines	11.4	9
Barrett Community Center, McDougal	10.9	10
Cipriani Hallmark, Wakefield	10.4	11
Hastings Tot Lot	10.2	12
Patricia Wharton, JUA: Central	10.0	13
College View	9.9	14
Belmont Sports Complex	9.4	15
JUA: Fox, JUA: Nesbit, JUA: Ralston	9.0	16
Davey Glen	8.0	17
Semeria	7.8	18



ABOUT THE PROJECT

PROCESS



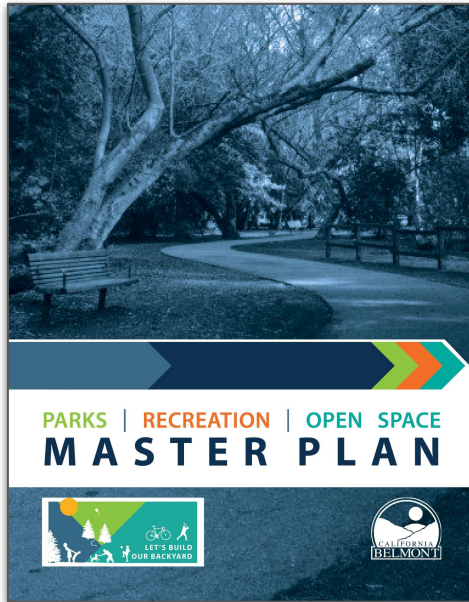
OPTIMIZED PLAN DOCUMENT

- Implementation & Optimized Plan



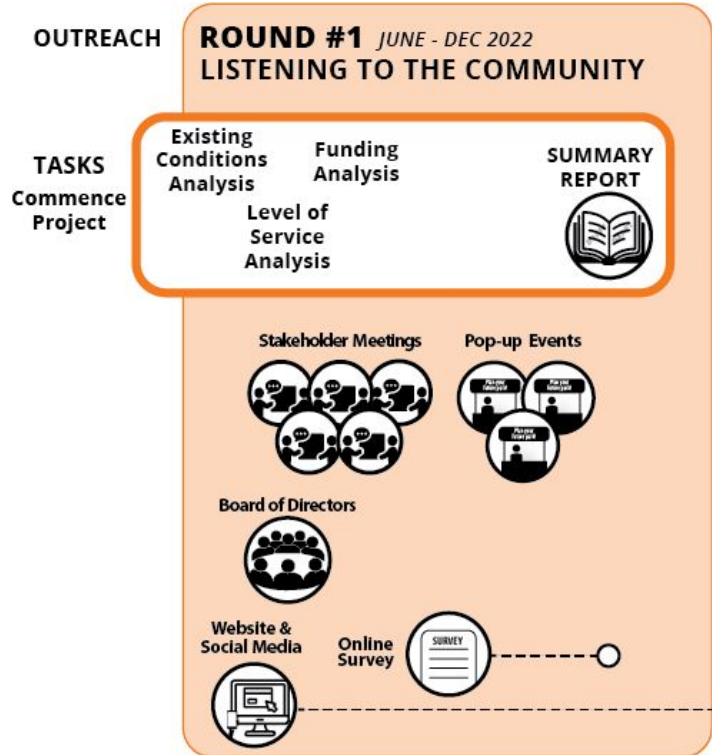
ABOUT THE PROJECT

PROCESS OPTIMIZED PLAN DOCUMENT





COMMUNITY ENGAGEMENT

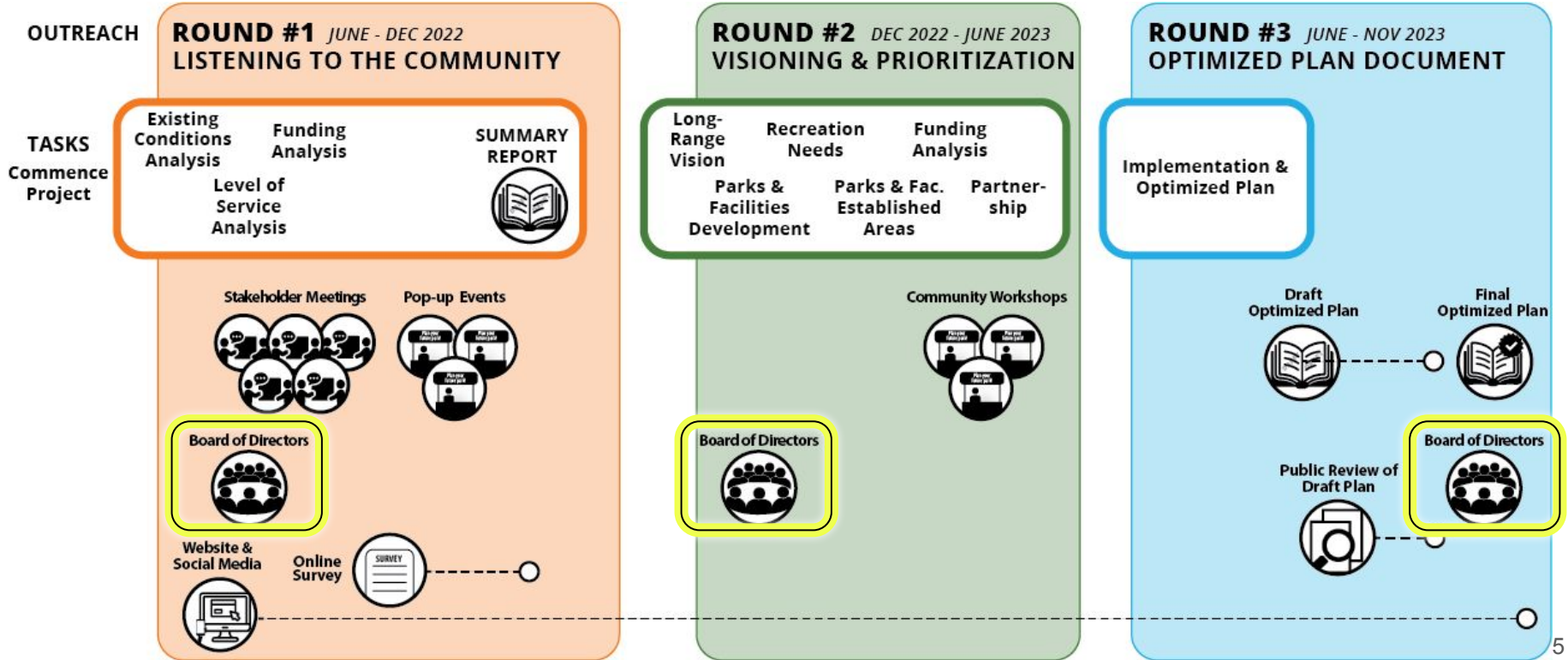


- Website is Live!
- Stakeholder Meetings
 - Tuesday afternoons beginning in August
- Board Workshop - Tonight, 8/17
- Online Survey
 - Concurrent with Pop-up Events in Fall 2022
- Pop-up Events - Round 1
 - Rosemont Community Day, Sat. 10/1
 - Halloween at Hagan, Sat. 10/29
 - Tree Lighting, Sun. 11/27
- Community Workshops - Round 2
 - Hosted at CRPD Facilities such as Hagan Community Center, Neil Orchard Senior Activities Center, White Rock Community Clubhouse



COMMUNITY ENGAGEMENT

BOARD OF DIRECTORS





COMMUNITY INPUT

(Fall 2022)

- Community Survey
- Community Events
 - **Oct 1** Rosemont Community Day
 - **Oct 29** Halloween at Hagan
 - **Nov 27** Tree Lighting

OPTIMIZED PLAN

- Ongoing
 - Existing Conditions Analysis
 - Level of Service Analysis
 - Funding Analysis
- Upcoming
 - Long-range Vision
 - Parks & Facilities Development
 - Recreation Needs
 - Park & Facilities Established Areas
 - Funding Analysis
- Community Workshops

NEXT STEPS

YOUR HOMEWORK

- Spread the word!
- Visit the project website www.crpdc.com/optimizedplan
- Share more of your thoughts in the **Community Survey** **COMING SOON**
- Participate at the **Community Events**



THANK YOU!



QUESTIONS & COMMENTS

www.crpdc.com/OptimizedPlan