

# DISTRICTING CRPD

Draft Maps

*February, 2022*

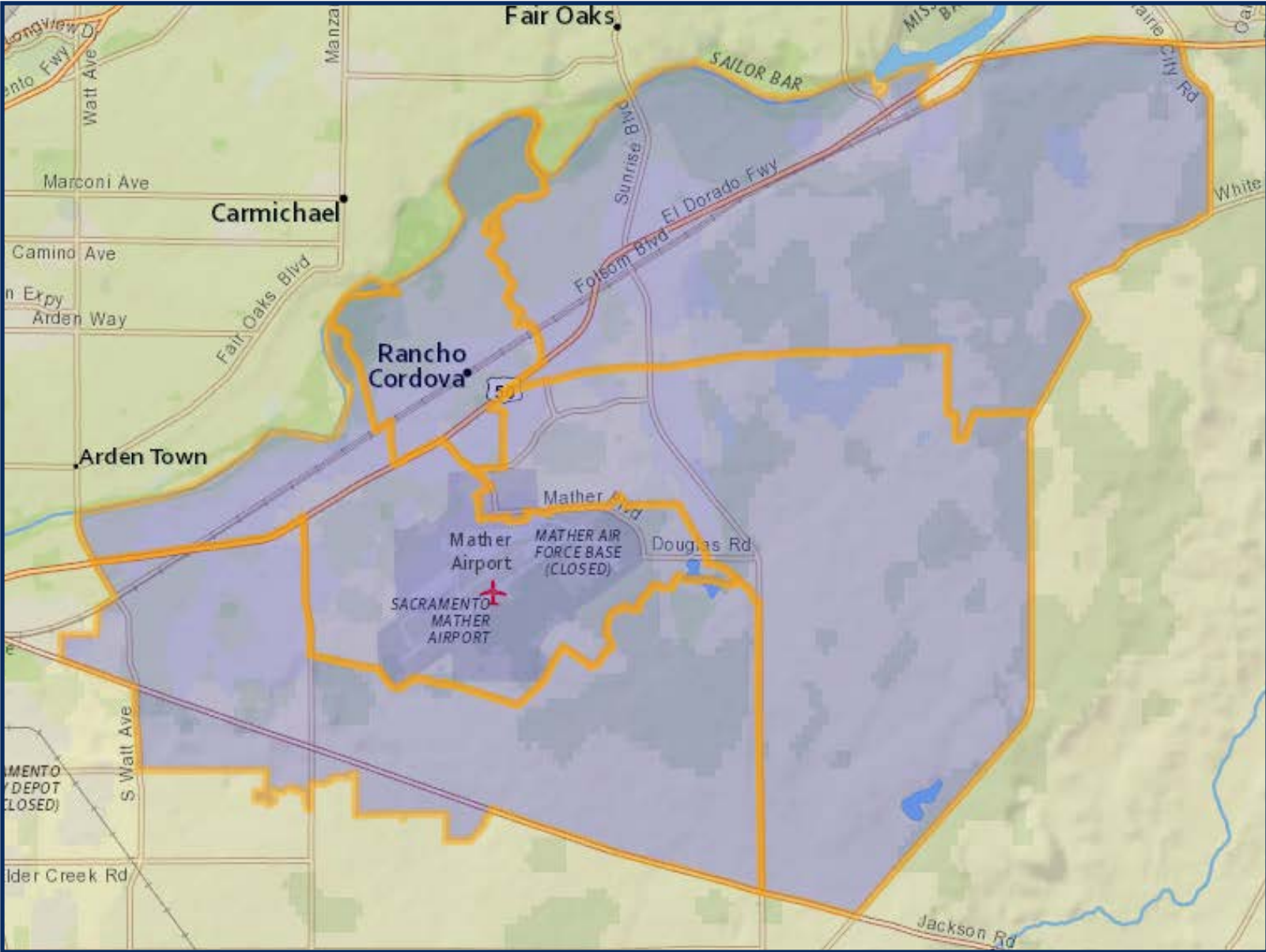
# DISTRICTING CRPD DRAFT I

	DISTRICT 1	DISTRICT 2	DISTRICT 3	DISTRICT 4	DISTRICT 5
2020 Census Count*	25,844	25,311	25,600	25,658	25,588
Deviation #	244	-289	-0	58	-12
Deviation %	0.9%	-1.1%	-0.0%	0.2%	-0.0%
2010 Census Count	24,886	23,752	15,099	23,545	23,687
2019 CVAP*	18,809	17,618	13,440	15,823	17,720
2010 CVAP	16,760	15,780	8,201	13,689	16,656

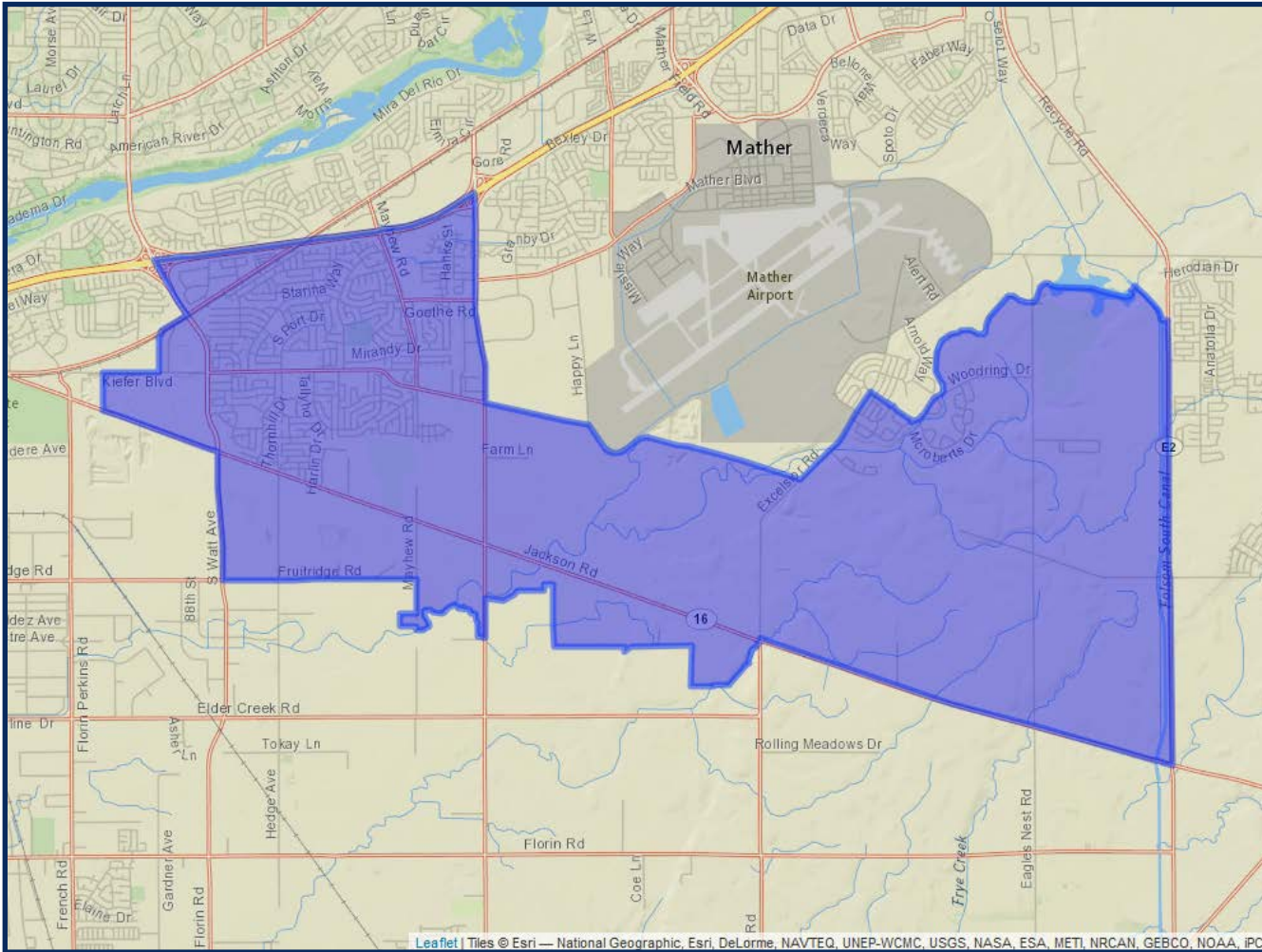


*\*Adjusted for prisoner reallocation*

DISTRICTING CRPD  
DRAFT I

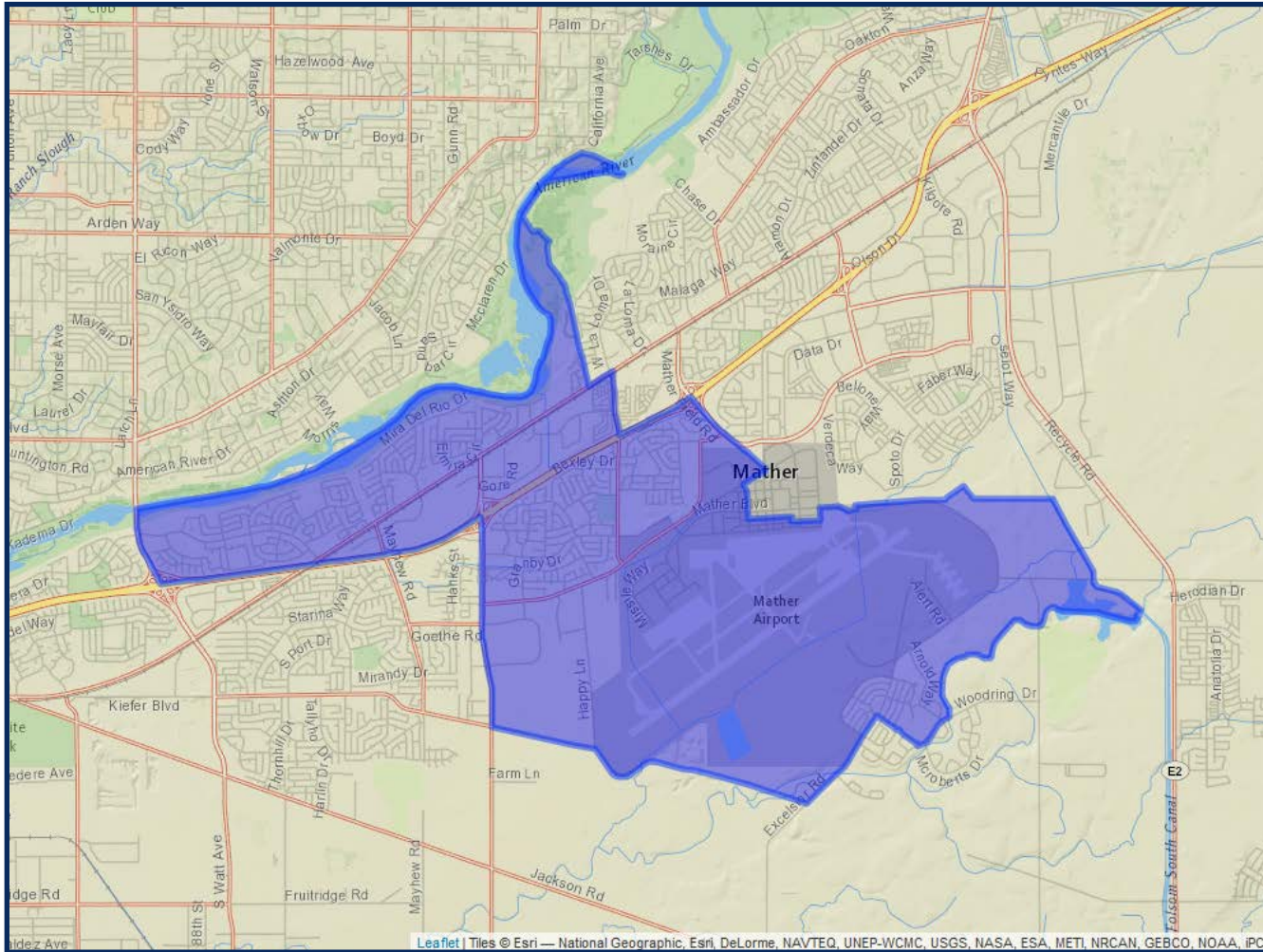


# DISTRICT 1



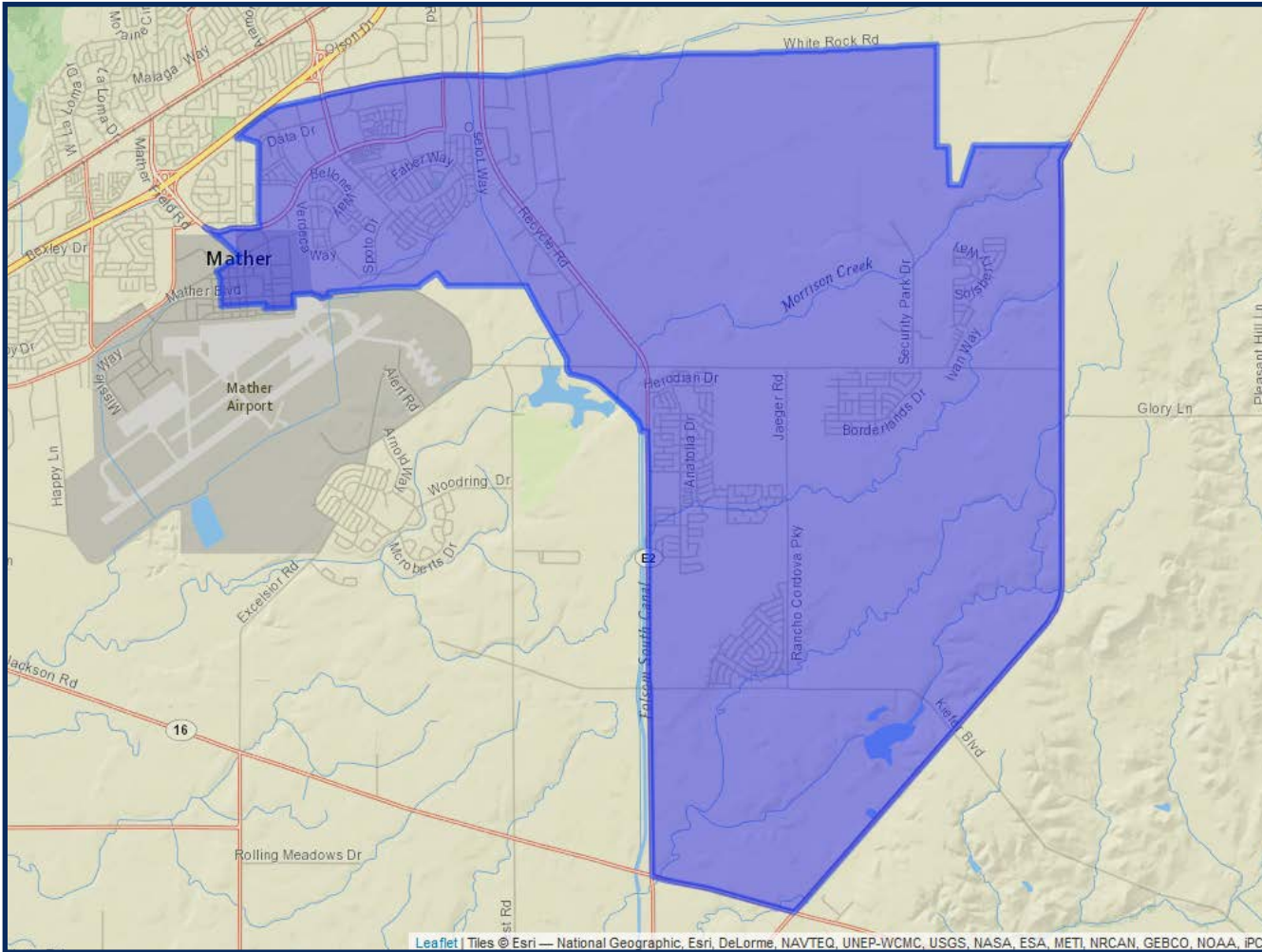
	2020 Count*	2019 CVAP*
Total	25,844	18,809
White	44.32%	52.16%
Black	11.40%	12.14%
Asian	11.89%	12.15%
Hispanic	23.04%	16.91%

## DISTRICT 2



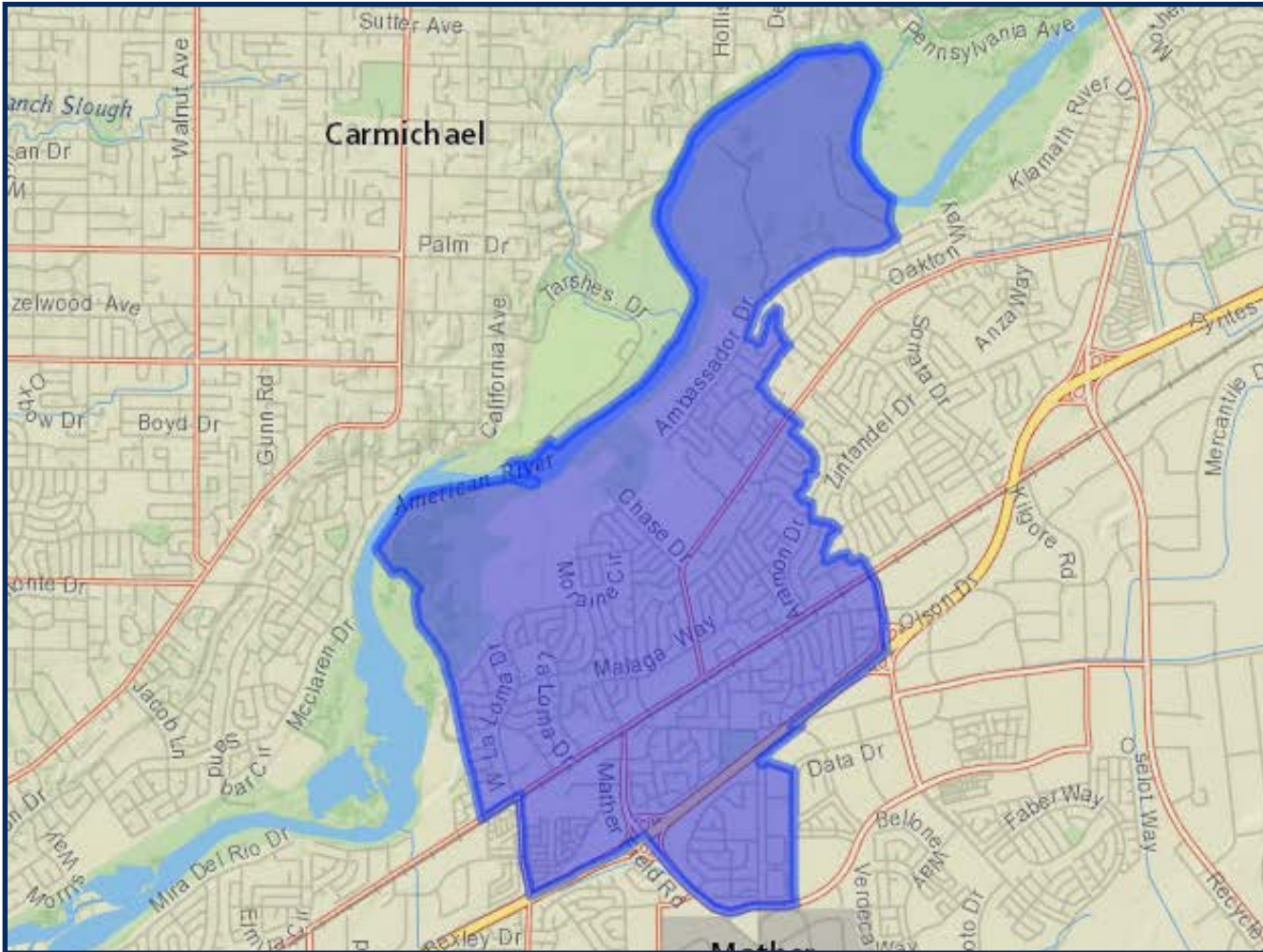
	2020 Count*	2019 CVAP*
Total	25,311	17,618
White	48.22%	50.78%
Black	9.68%	11.82%
Asian	10.05%	11.10%
Hispanic	22.54%	19.87%

### DISTRICT 3



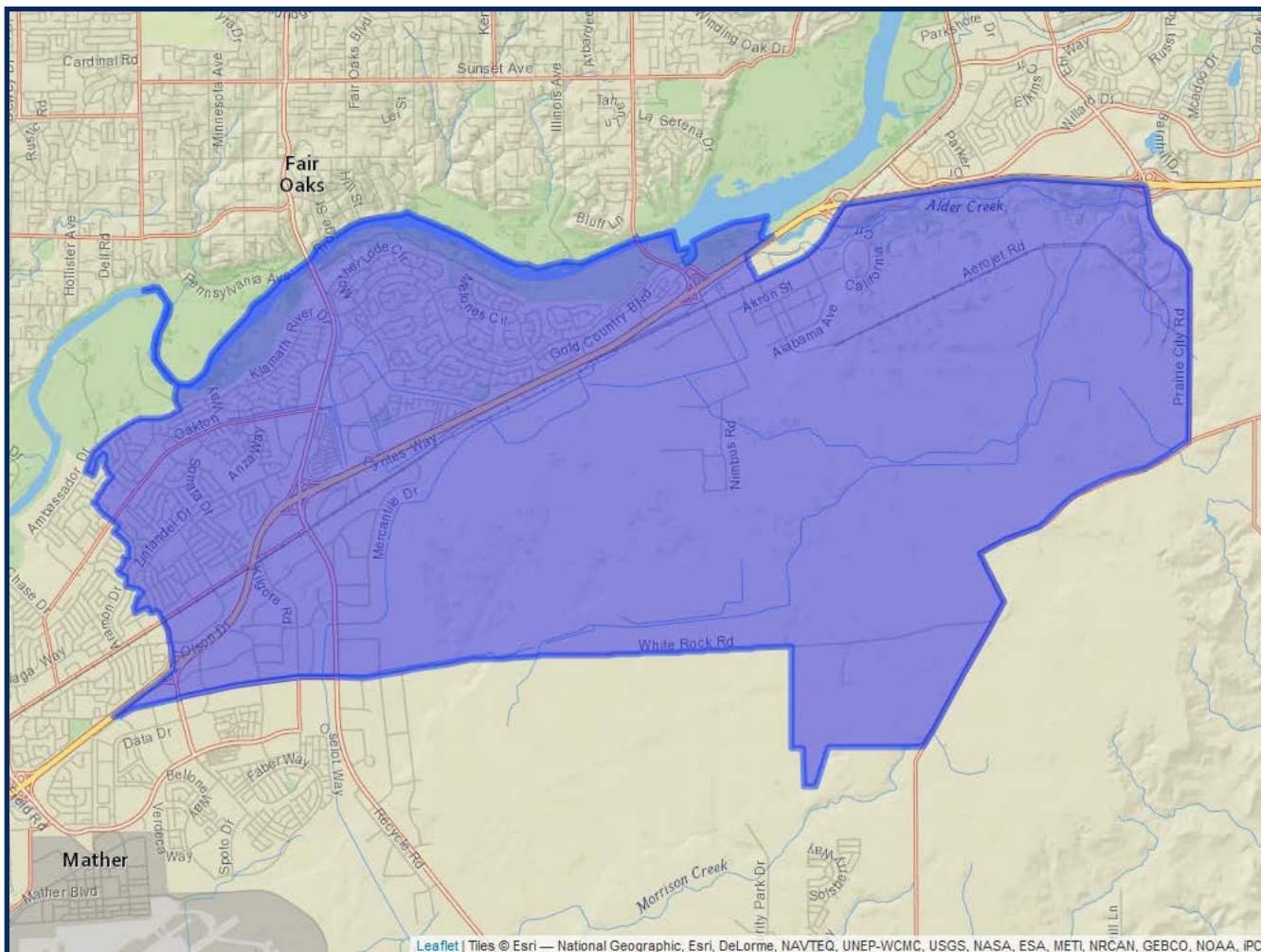
	2020 Count*	2019 CVAP*
Total	25,600	13,440
White	40.64%	47.66%
Black	7.41%	9.41%
Asian	28.68%	25.71%
Hispanic	13.66%	12.10%

## DISTRICT 4



	2020 Count*	2019 CVAP*
Total	25,658	15,823
White	42.70%	58.64%
Black	11.53%	12.04%
Asian	8.64%	4.68%
Hispanic	27.34%	18.34%

## DISTRICT 5



	2020 Count*	2019 CVAP*
Total	25,588	17,720
White	55.97%	67.49%
Black	5.71%	5.30%
Asian	11.47%	10.23%
Hispanic	18.54%	11.86%



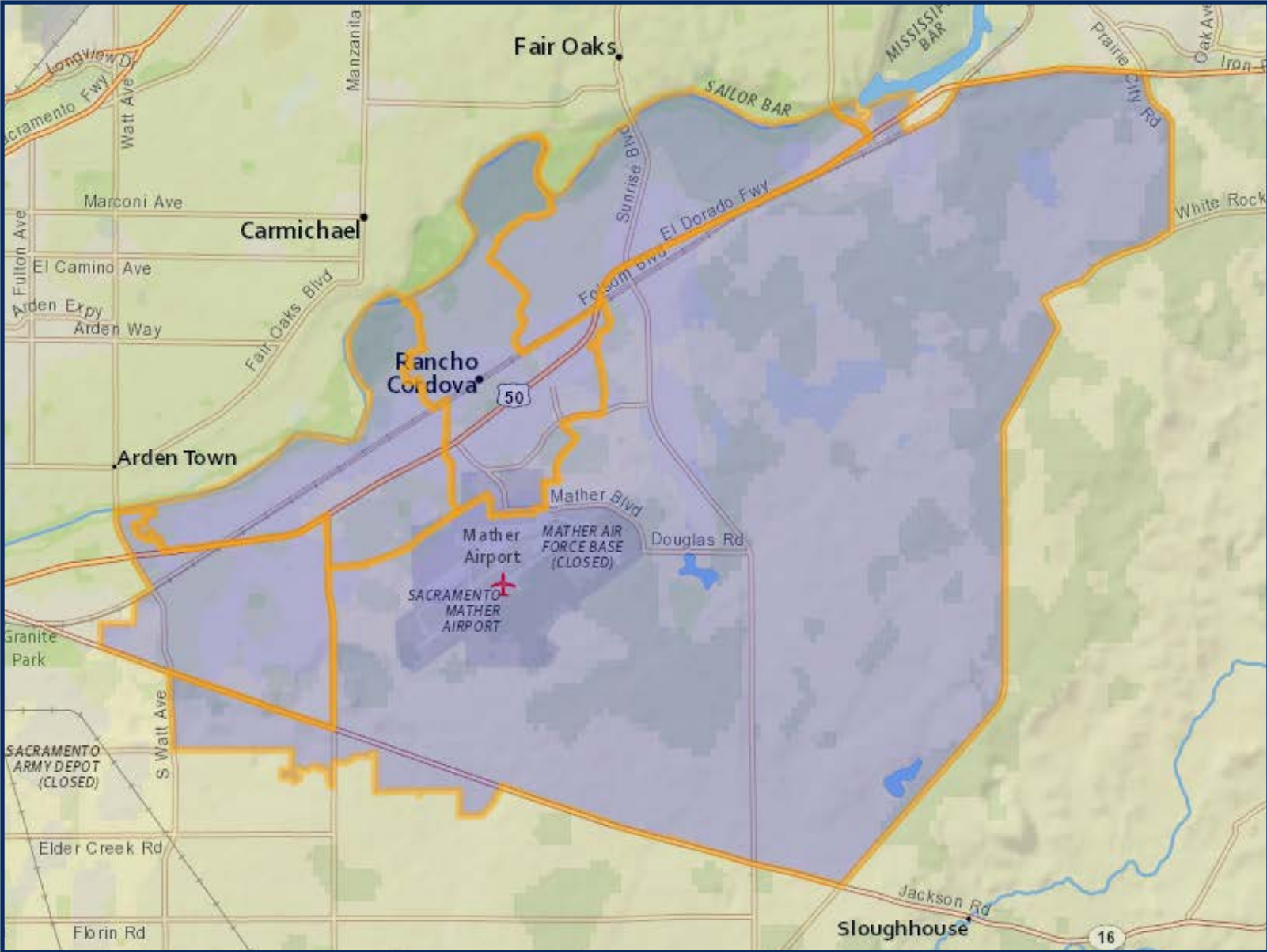
# DISTRICTING CRPD DRAFT 2

	DISTRICT 1	DISTRICT 2	DISTRICT 3	DISTRICT 4	DISTRICT 5
2020 Census Count*	25,893	25,211	25,909	26,040	24,948
Deviation #	293	-389	309	440	-652
Deviation %	1.1%	-1.5%	1.2%	1.7%	-2.6%
2010 Census Count	15,521	23,972	24,366	23,174	23,936
2019 CVAP*	13,771	18,740	17,813	15,737	17,349
2010 CVAP	9,104	16,216	15,543	13,432	16,791

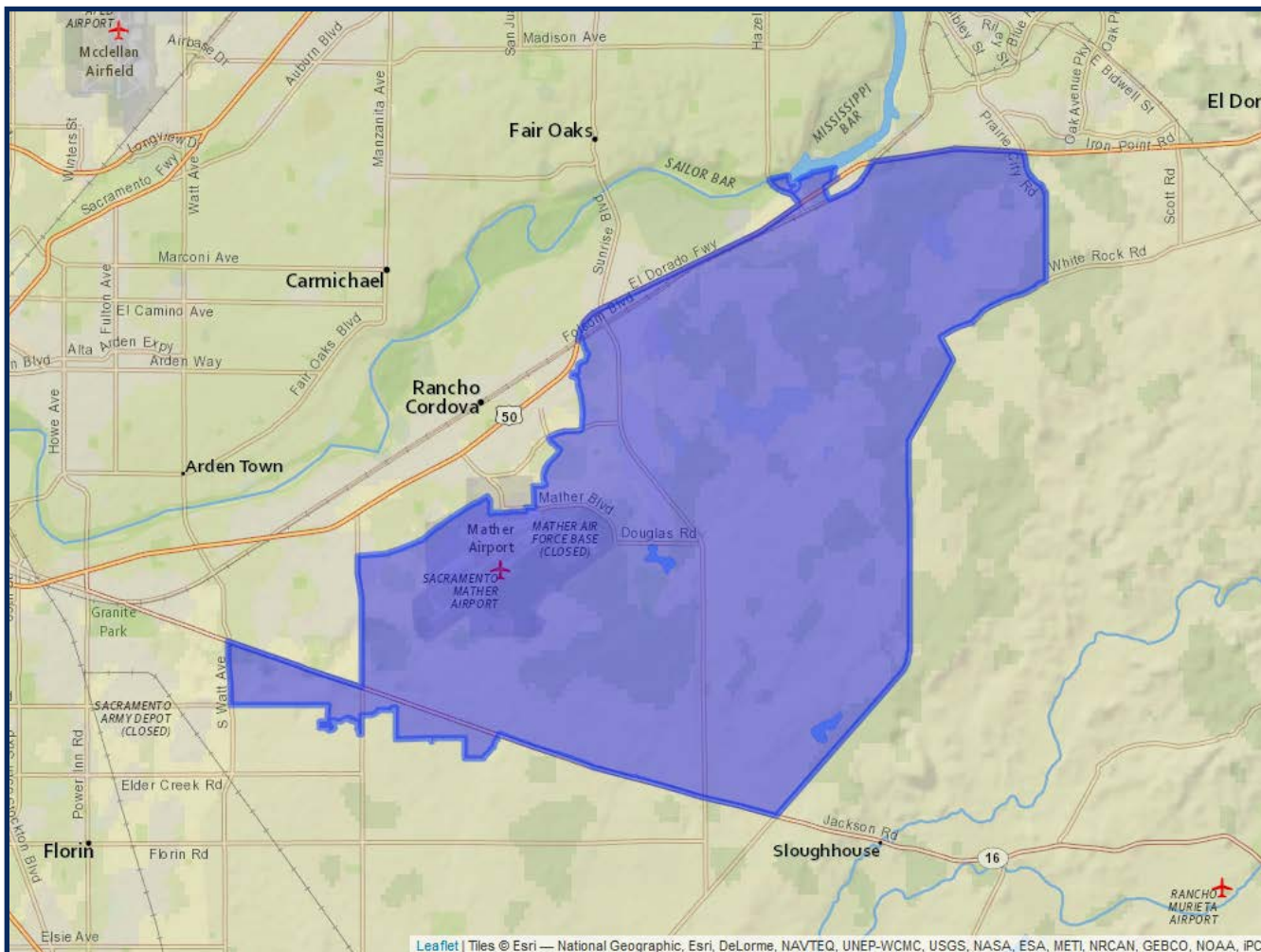


\*Adjusted for prisoner reallocation

DISTRICTING CRPD  
DRAFT 2

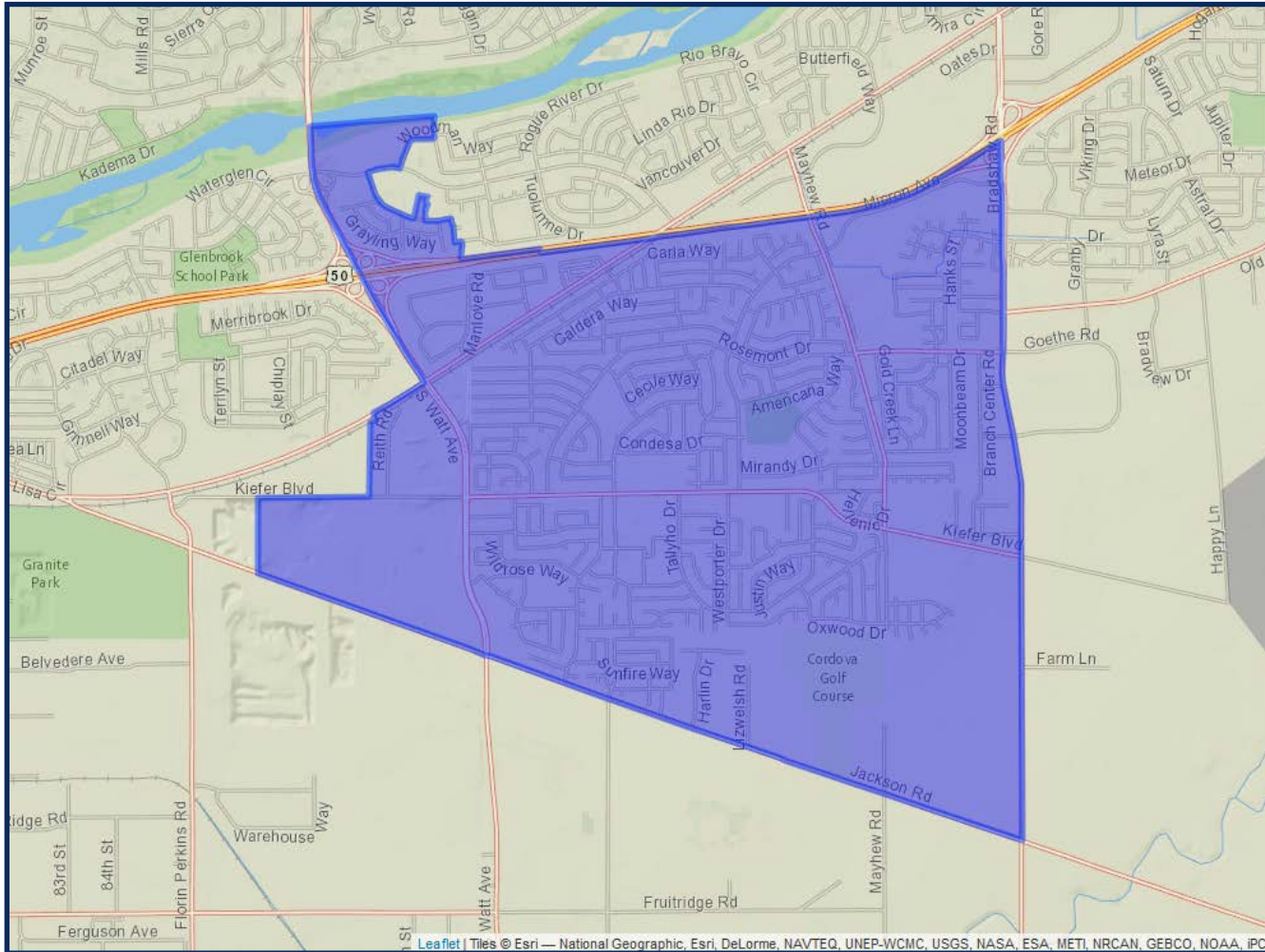


# DISTRICT 1



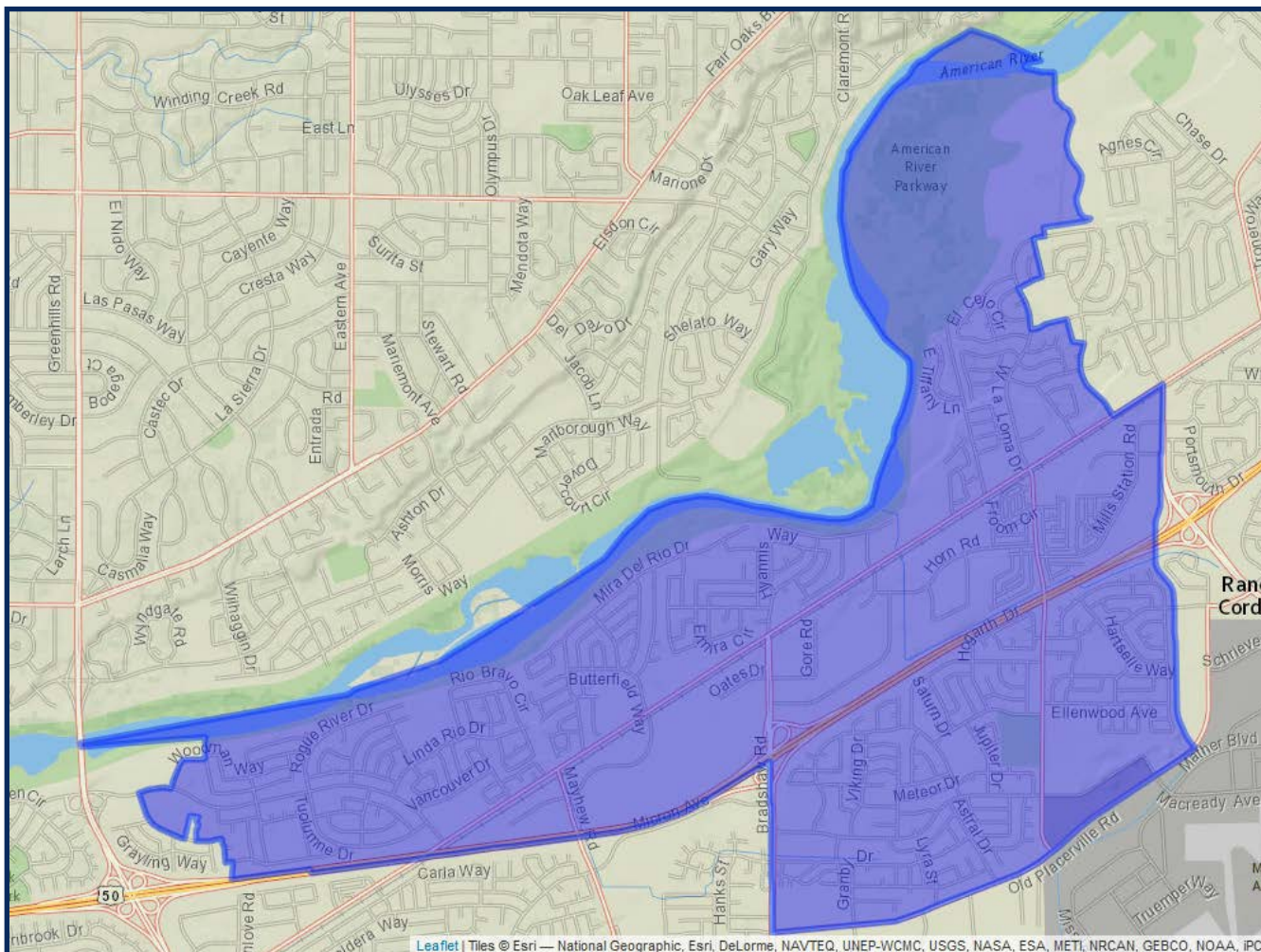
	2020 Count*	2019 CVAP*
Total	25,893	13,771
White	41.81%	49.95%
Black	6.77%	8.27%
Asian	27.17%	24.42%
Hispanic	14.63%	12.15%

## DISTRICT 2



	2020 Count*	2019 CVAP*
Total	25,211	18,740
White	43.66%	51.27%
Black	11.90%	11.95%
Asian	11.31%	11.61%
Hispanic	24.06%	18.72%

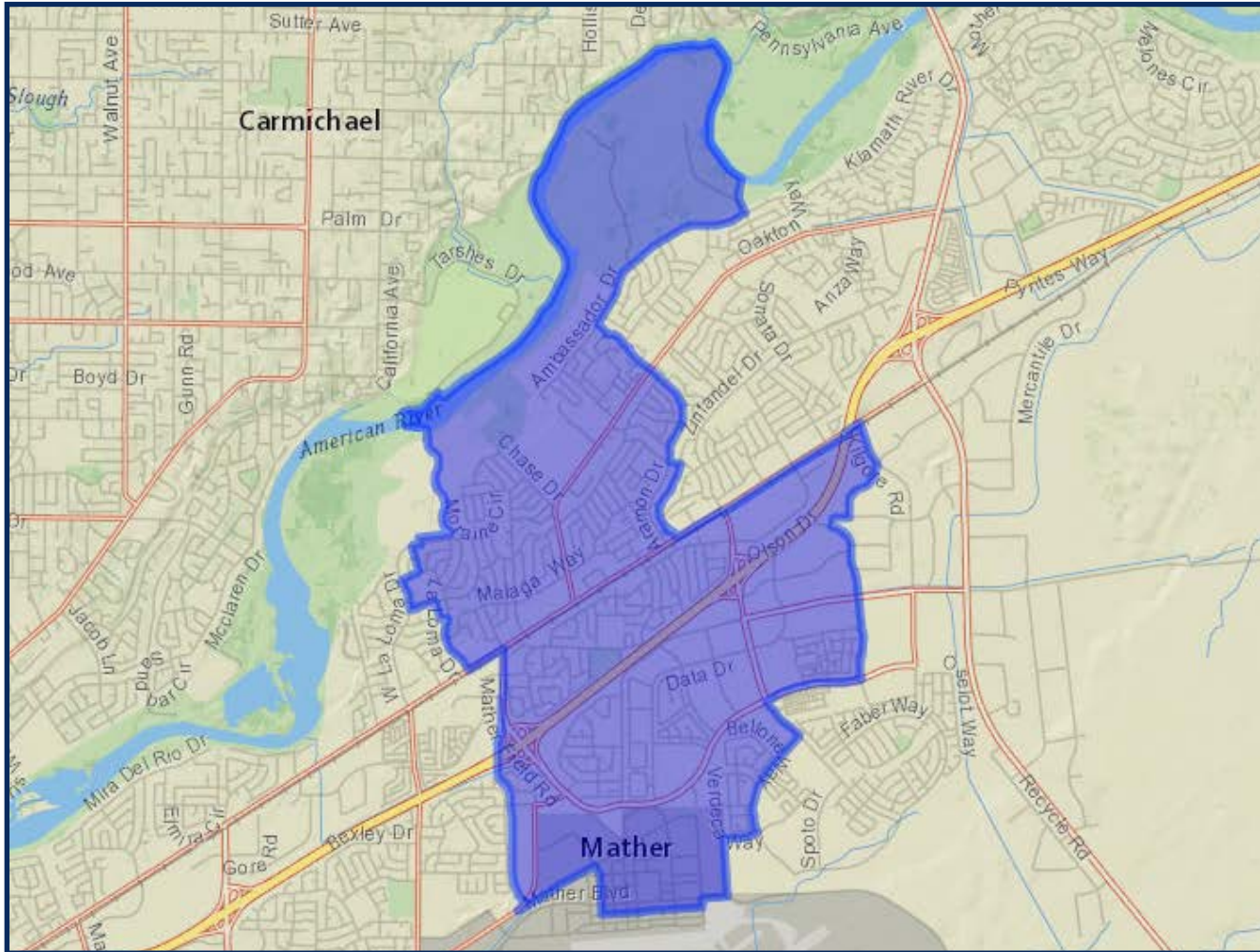
### DISTRICT 3



	2020 Count*	2019 CVAP*
Total	25,909	17,813
White	46.22%	50.61%
Black	10.91%	13.69%
Asian	10.17%	9.61%
Hispanic	22.78%	19.20%

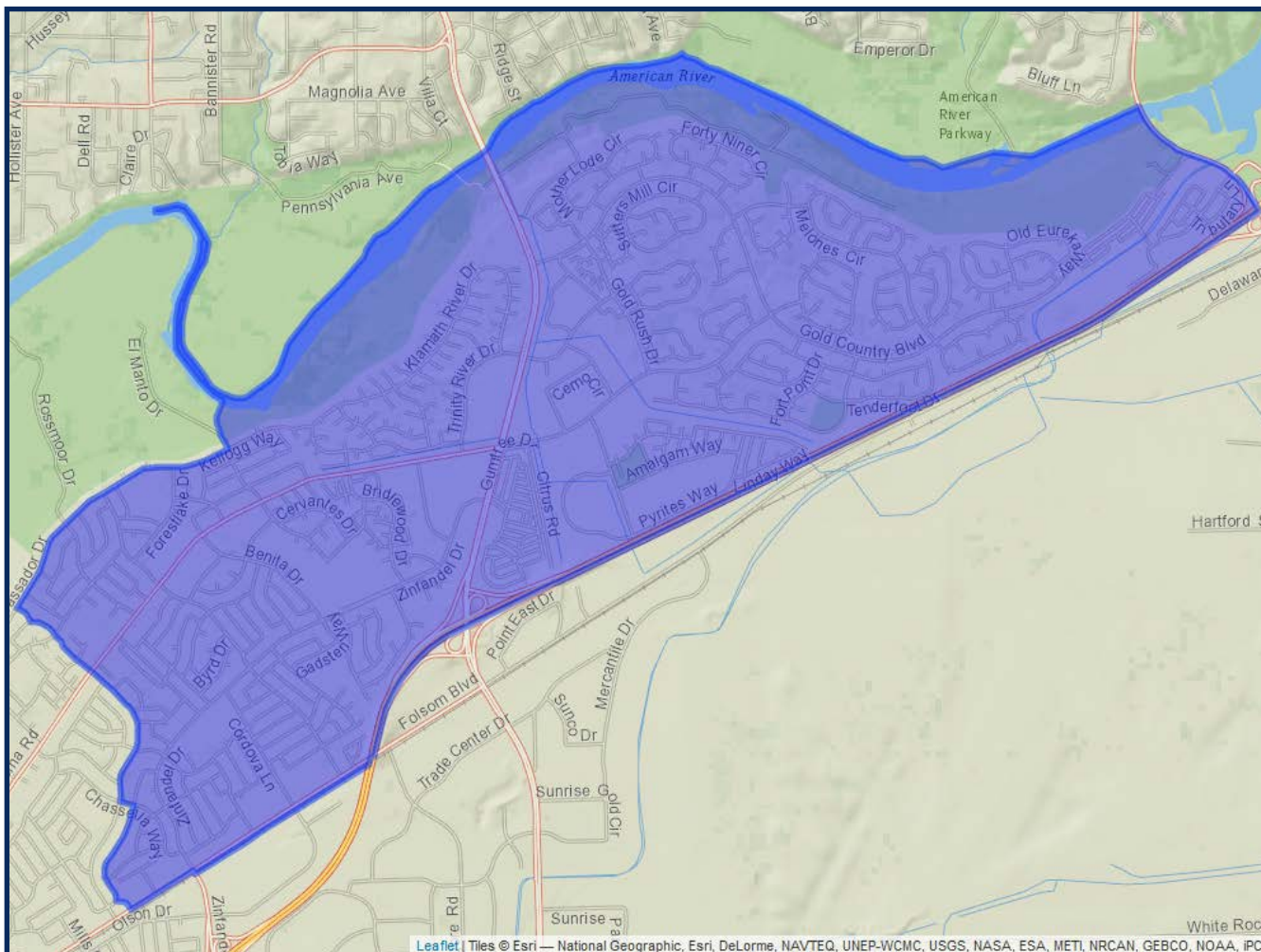
\*Adjusted for prisoner reallocation

## DISTRICT 4



	2020 Count*	2019 CVAP*
Total	26,040	15,737
White	43.89%	57.91%
Black	10.51%	11.08%
Asian	10.76%	7.89%
Hispanic	25.15%	16.76%

## DISTRICT 5



	2020 Count*	2019 CVAP*
Total	24,948	17,349
White	56.54%	67.93%
Black	5.60%	5.27%
Asian	11.18%	10.13%
Hispanic	18.47%	11.94%

# DISTRICTING CRPD DRAFT 3

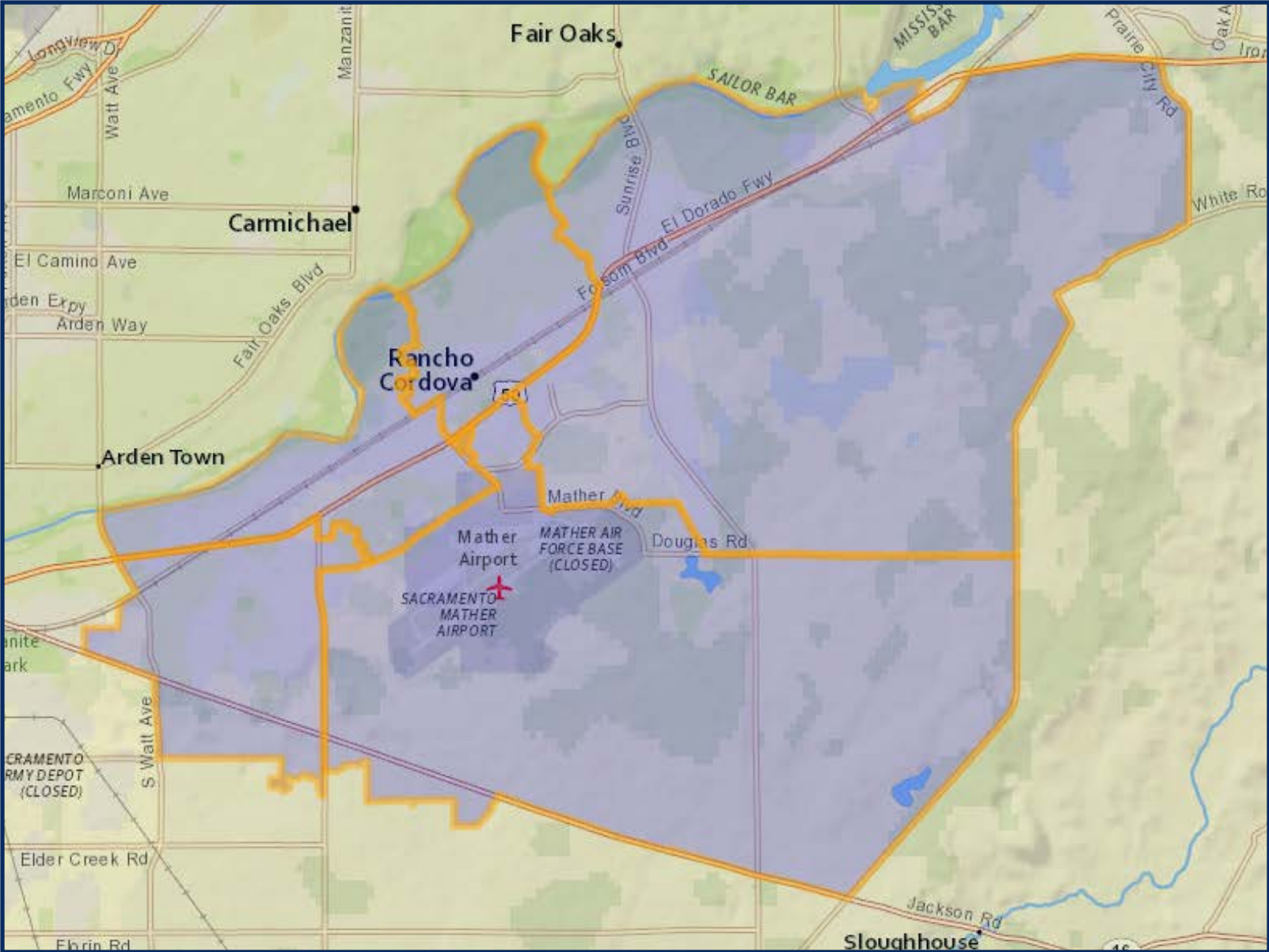
	DISTRICT 1	DISTRICT 2	DISTRICT 3	DISTRICT 4	DISTRICT 5
2020 Census Count*	25,340	25,771	25,680	25,468	25,742
Deviation #	-260	171	80	-132	142
Deviation %	-1.0%	0.7%	0.3%	-0.5%	0.6%
2010 Census Count	19,768	18,918	24,493	23,817	23,973
2019 CVAP*	16,216	14,295	18,768	17,739	16,392
2010 CVAP	14,197	10,619	16,343	15,602	14,325



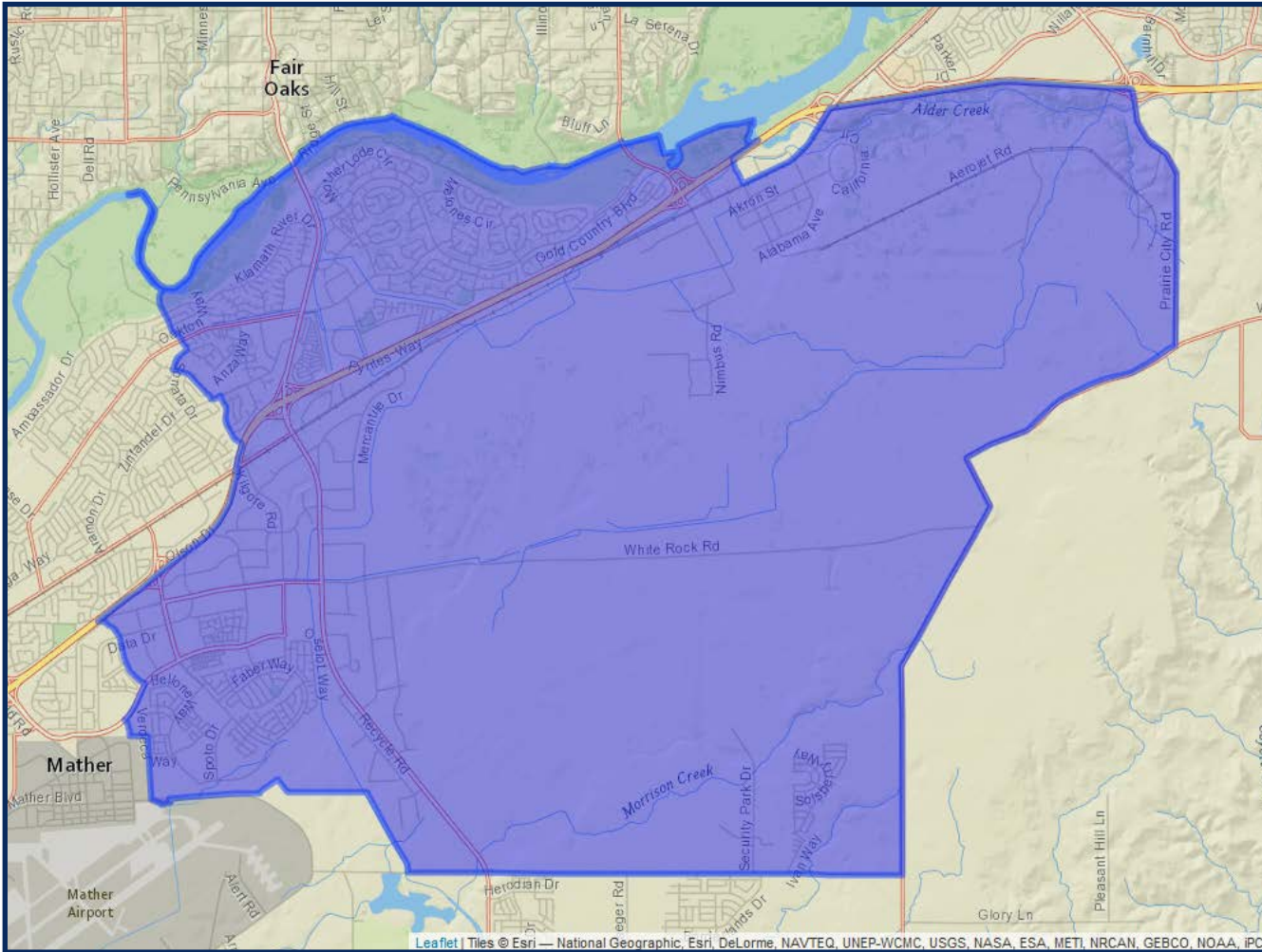
*\*Adjusted for prisoner reallocation*



DISTRICTING CRPD  
DRAFT 3

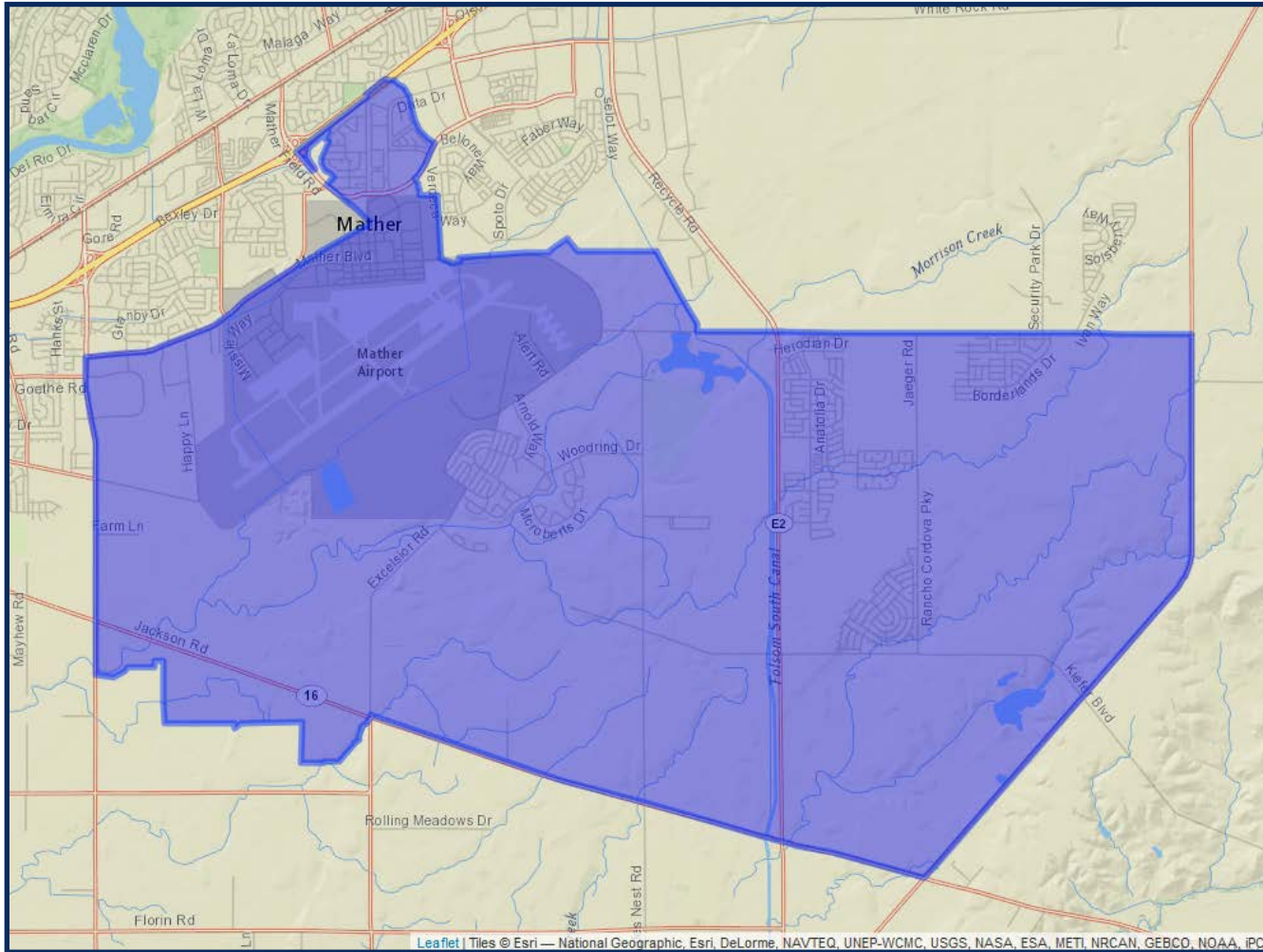


# DISTRICT 1



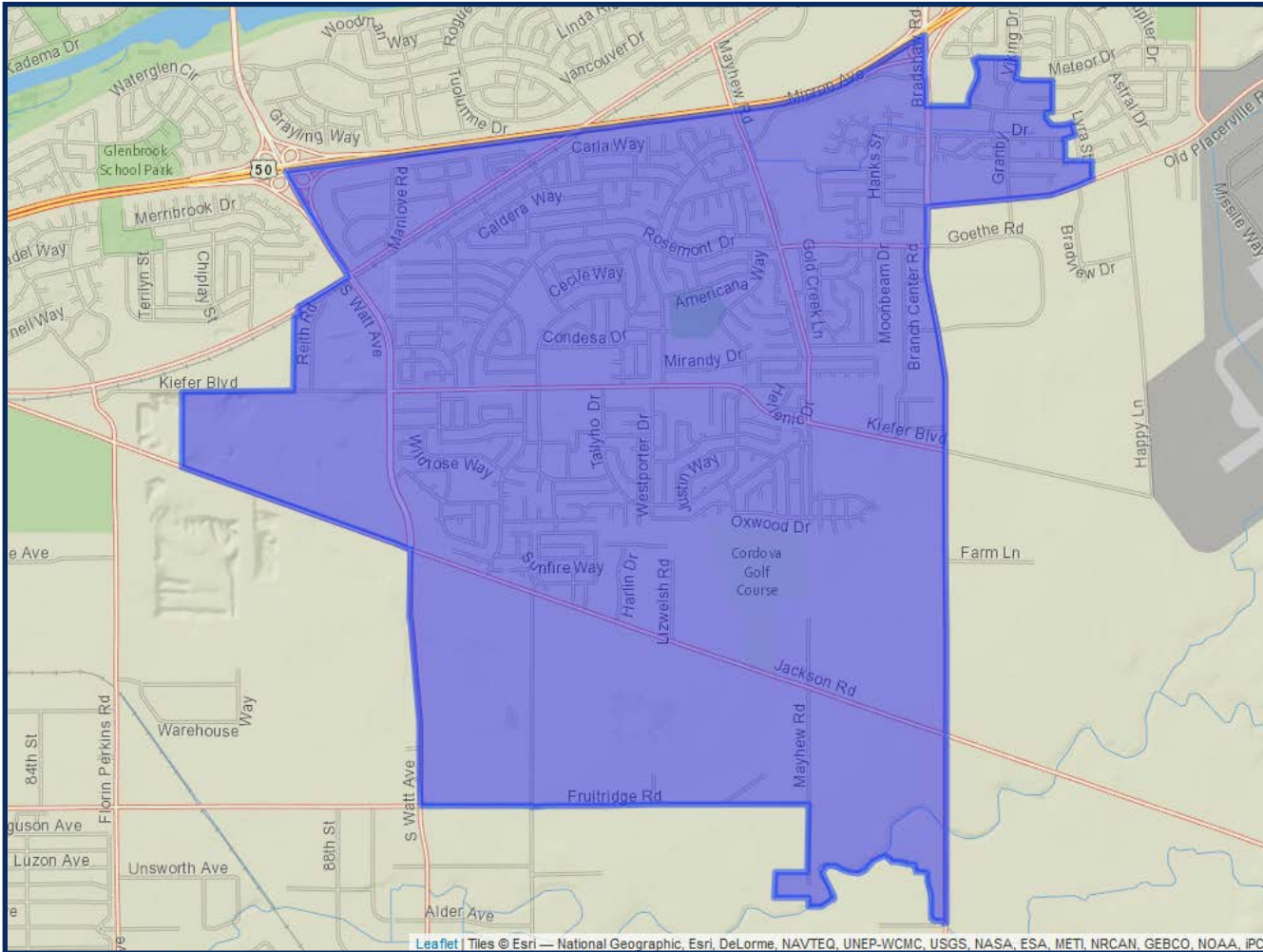
	2020 Count*	2019 CVAP*
Total	25,340	16,216
White	54.15%	64.95%
Black	5.20%	5.24%
Asian	18.71%	15.78%
Hispanic	13.55%	9.16%

## DISTRICT 2



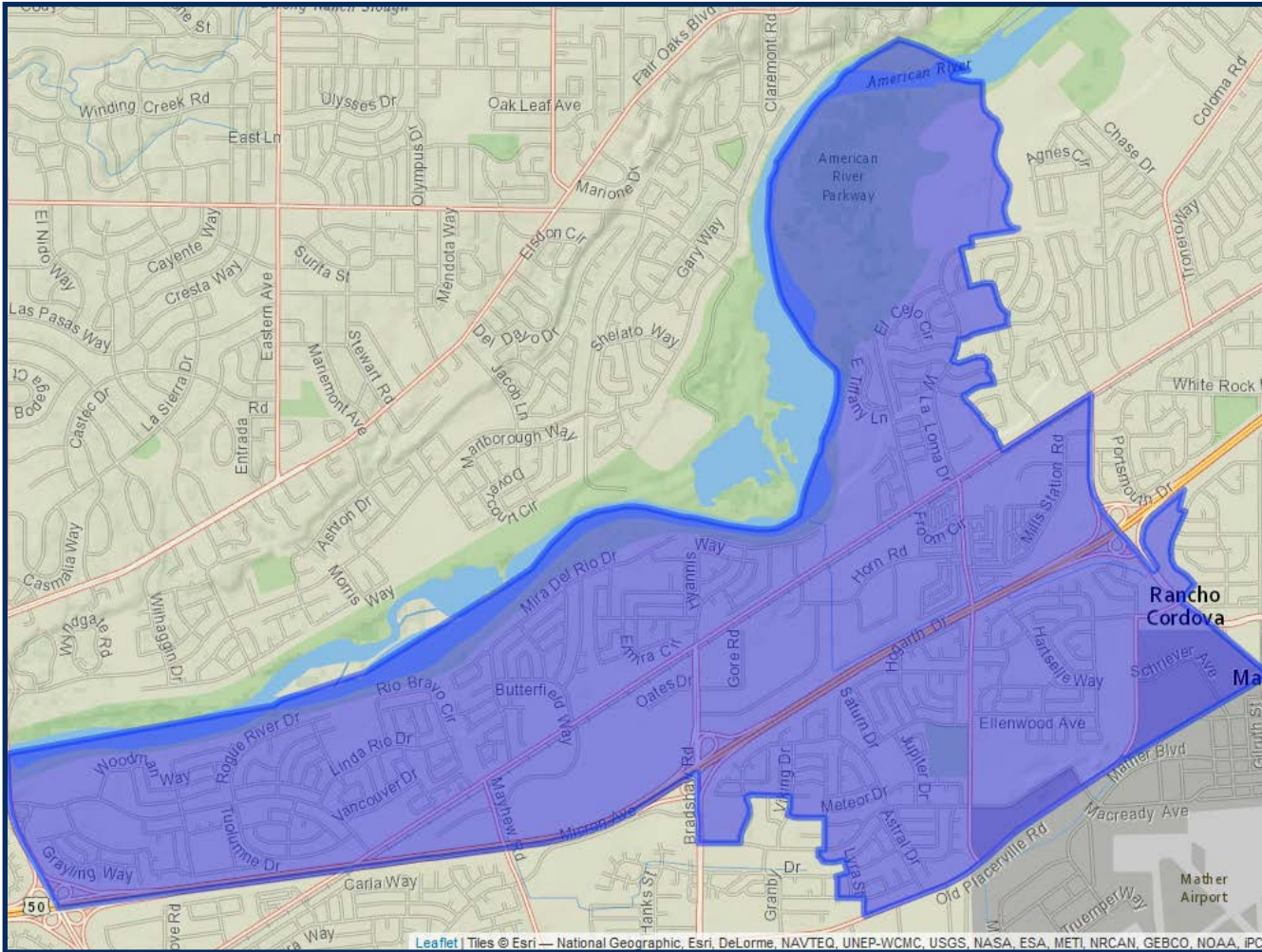
	2020 Count*	2019 CVAP*
Total	25,771	14,295
White	39.51%	48.32%
Black	9.52%	12.25%
Asian	23.01%	20.80%
Hispanic	17.84%	12.66%

### DISTRICT 3



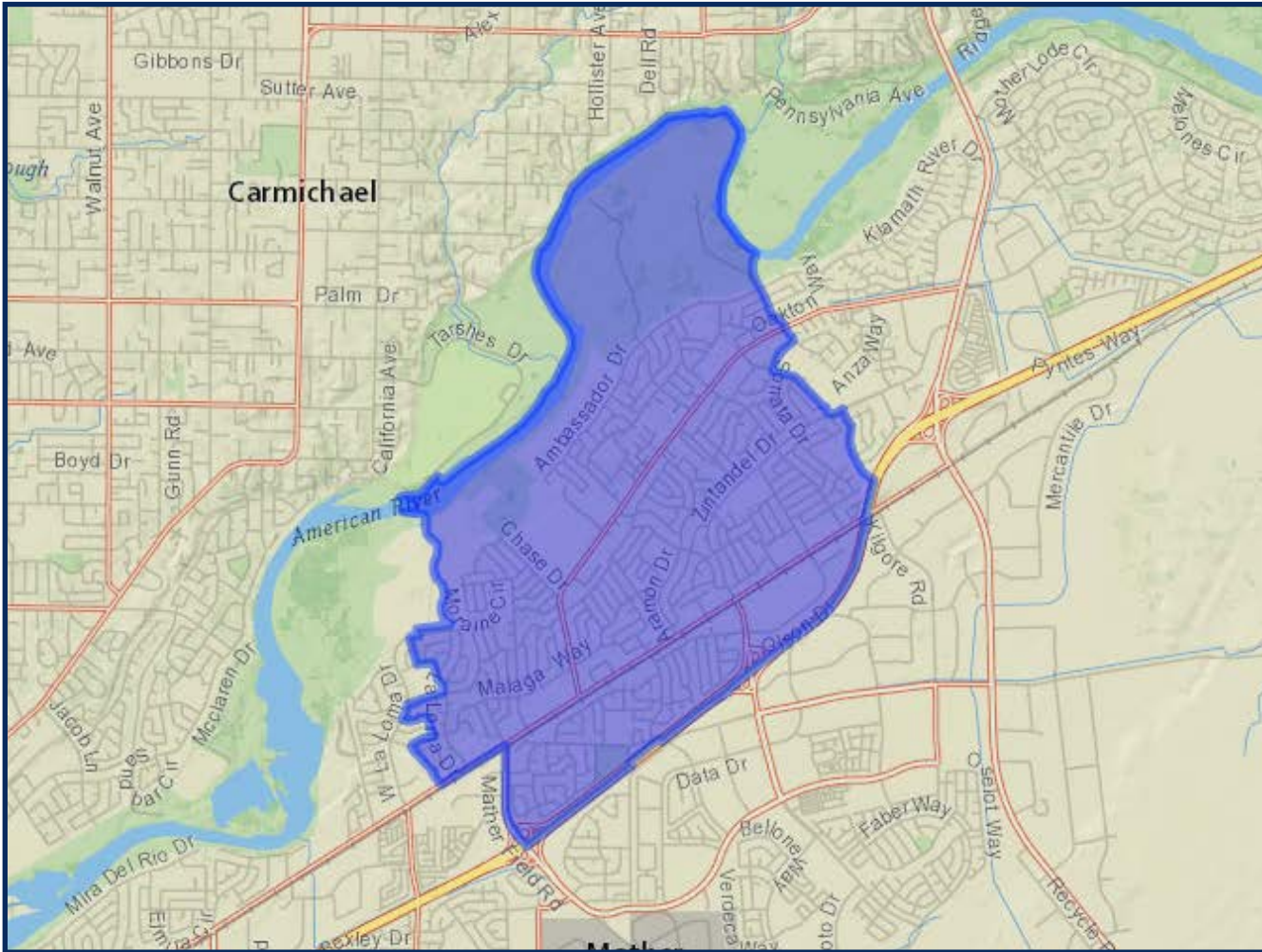
	2020 Count*	2019 CVAP*
Total	25,680	18,768
White	43.94%	51.86%
Black	11.77%	12.37%
Asian	11.29%	11.58%
Hispanic	23.85%	17.23%

## DISTRICT 4



	2020 Count*	2019 CVAP*
Total	25,468	17,739
White	46.25%	49.77%
Black	10.81%	13.08%
Asian	10.51%	9.97%
Hispanic	22.49%	20.60%

## DISTRICT 5



	2020 Count*	2019 CVAP*
Total	25,742	16,392
White	48.08%	63.44%
Black	8.41%	7.52%
Asian	7.25%	4.72%
Hispanic	27.32%	19.08%

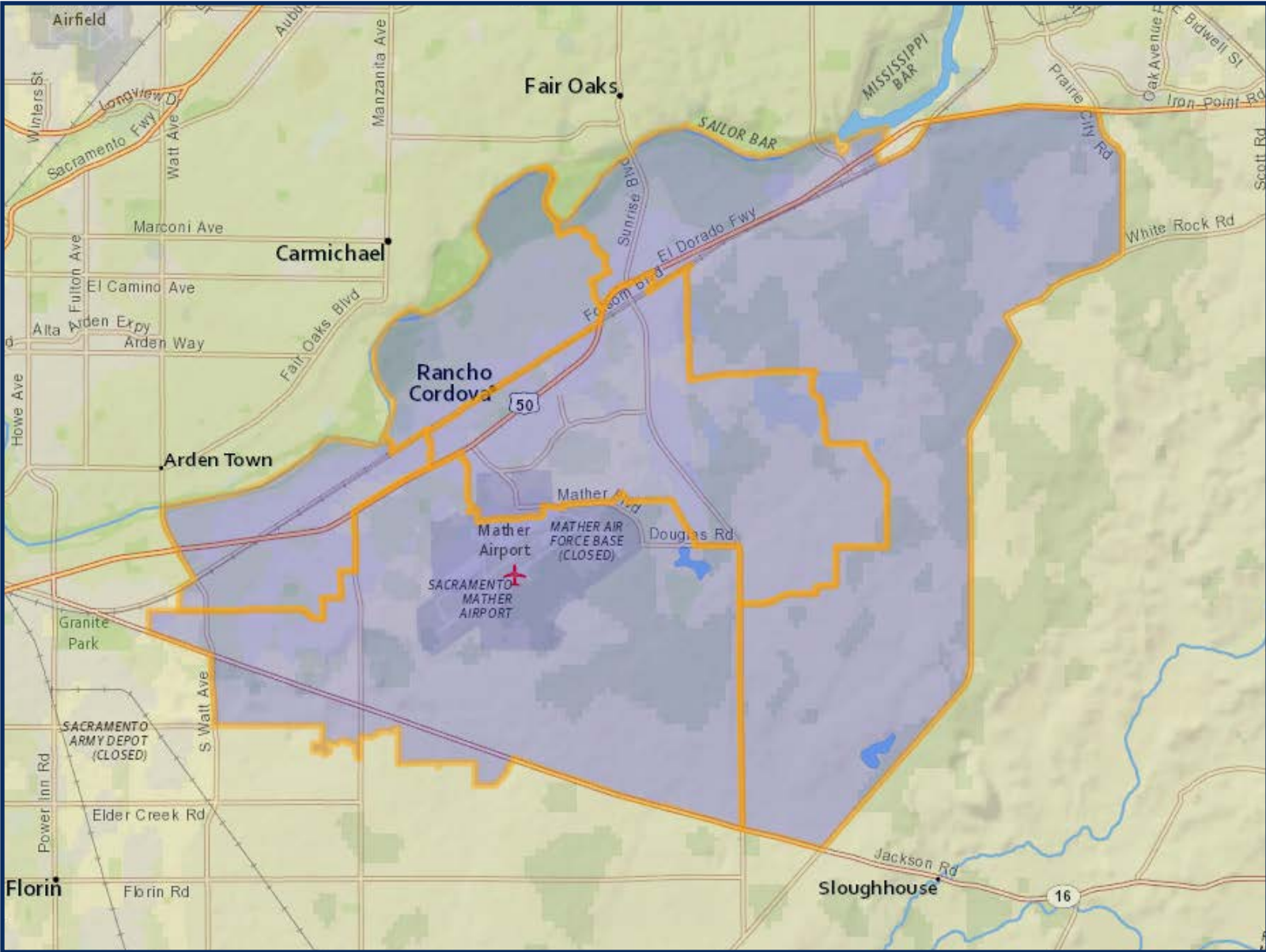
# DISTRICTING CRPD DRAFT 4

	DISTRICT 1	DISTRICT 2	DISTRICT 3	DISTRICT 4	DISTRICT 5
2020 Census Count*	25,568	25,689	25,220	25,801	25,723
Deviation #	-32	89	-380	201	123
Deviation %	-0.1%	0.3%	-1.5%	0.8%	0.5%
2010 Census Count	23,878	24,211	24,171	21,272	17,437
2019 CVAP*	16,670	19,483	16,758	14,646	15,853
2010 CVAP	14,589	16,989	15,364	11,928	12,217



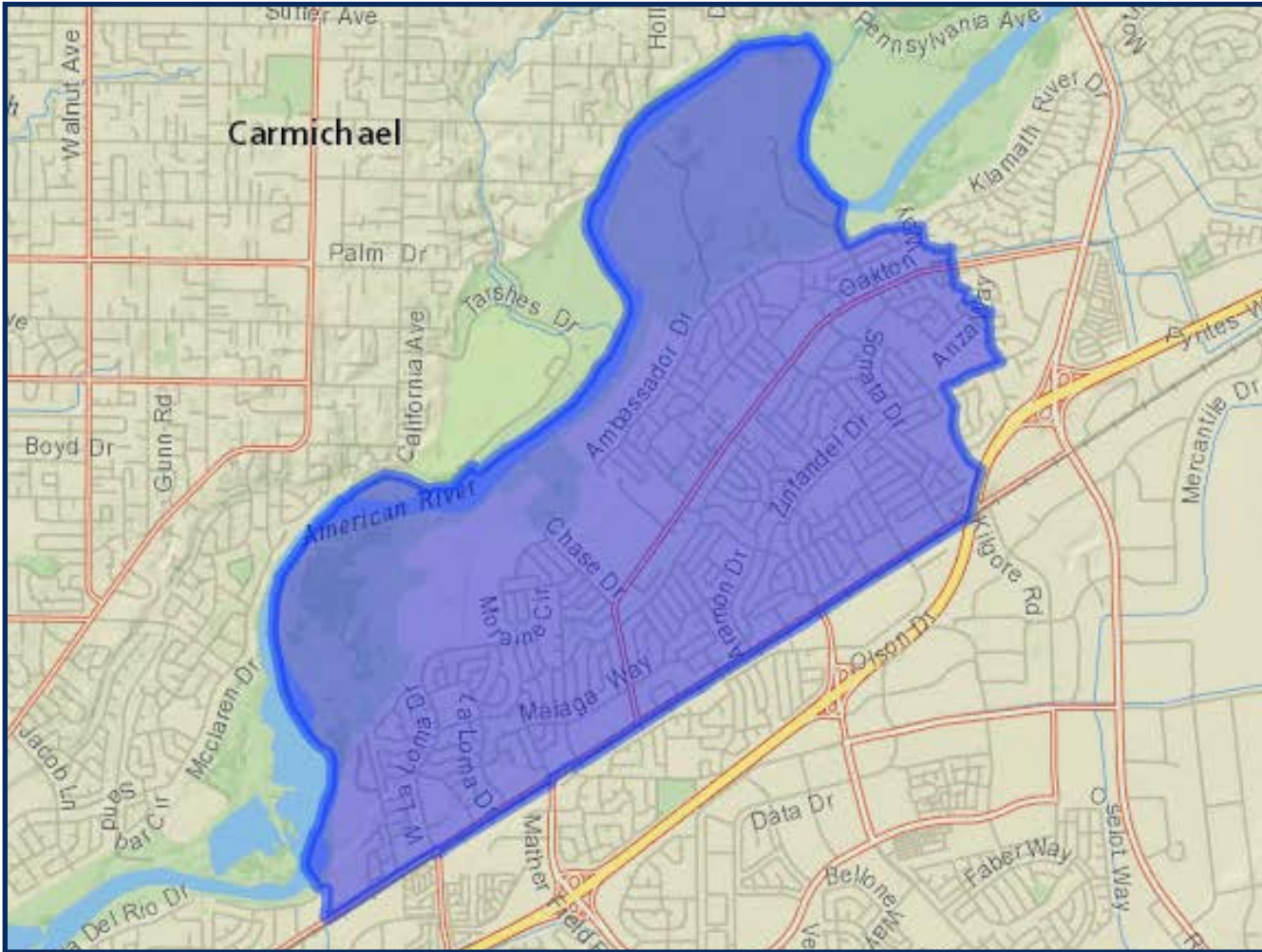
*\*Adjusted for prisoner reallocation*

# DISTRICTING CRPD DRAFT 4



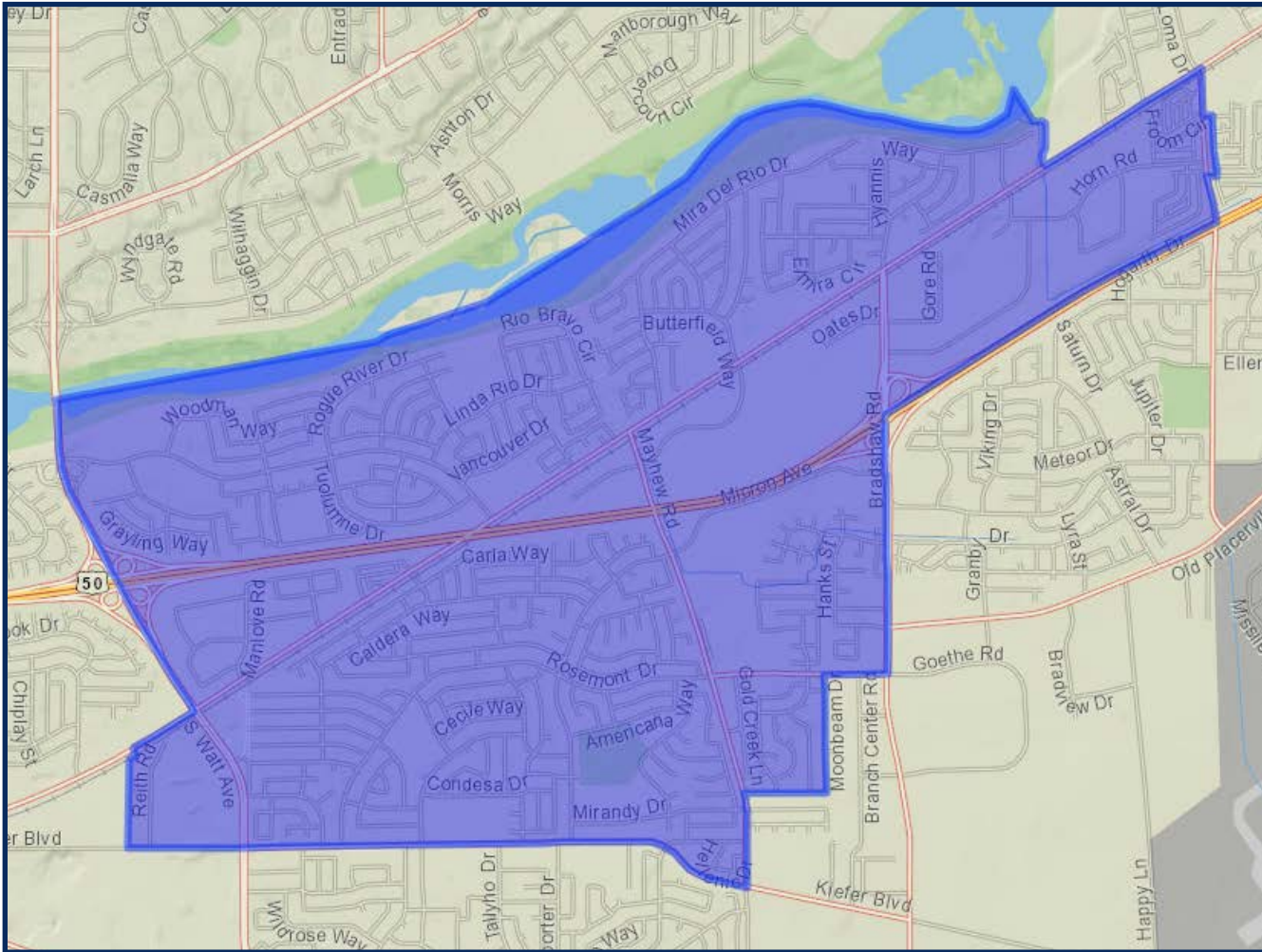


# DISTRICT 1



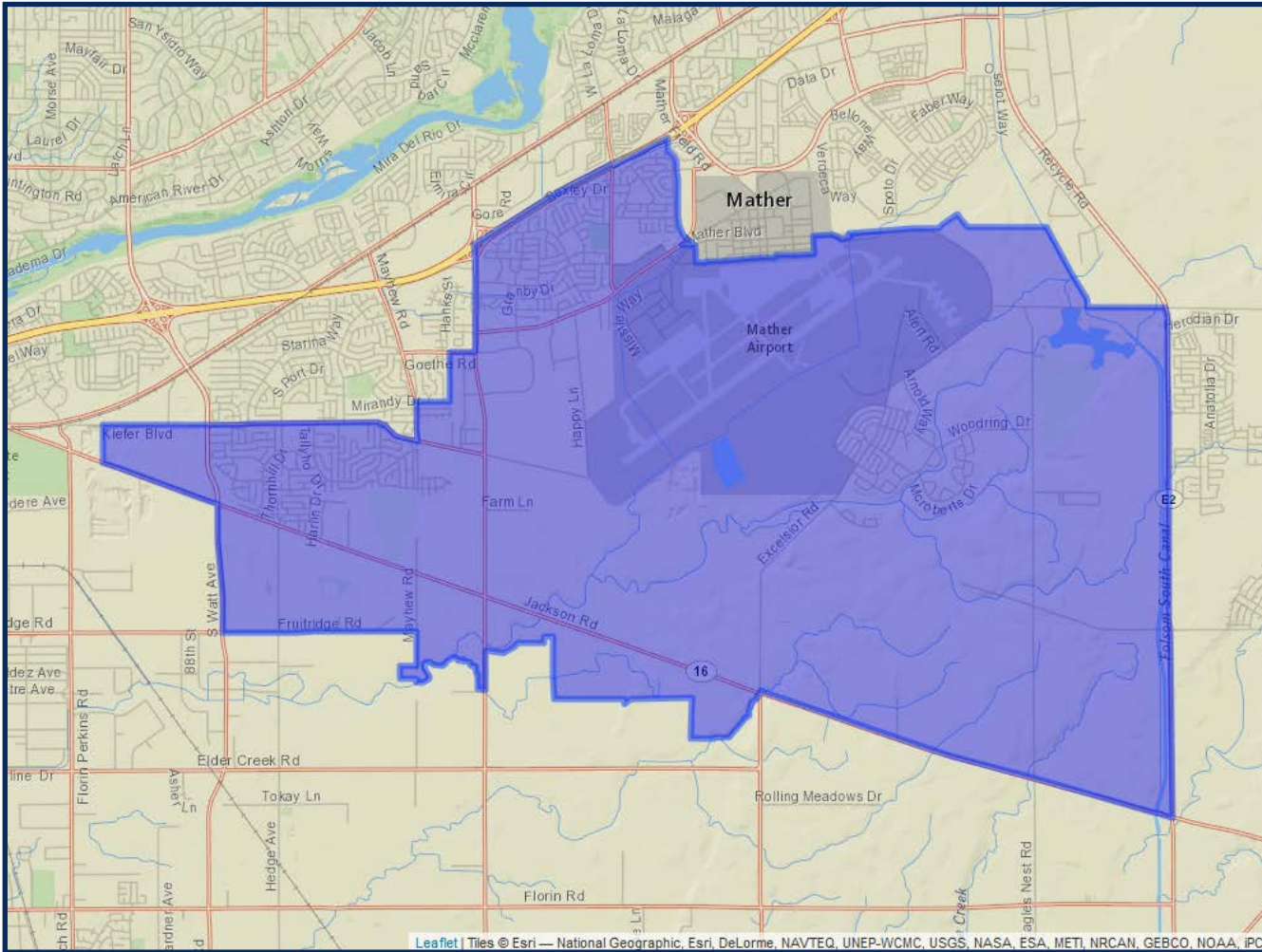
	2020 Count*	2019 CVAP*
Total	25,568	16,670
White	48.69%	65.06%
Black	8.66%	5.68%
Asian	7.79%	5.42%
Hispanic	25.52%	17.84%

## DISTRICT 2



	2020 Count*	2019 CVAP*
Total	25,689	19,483
White	48.44%	54.55%
Black	10.35%	10.43%
Asian	9.39%	8.29%
Hispanic	22.40%	21.37%

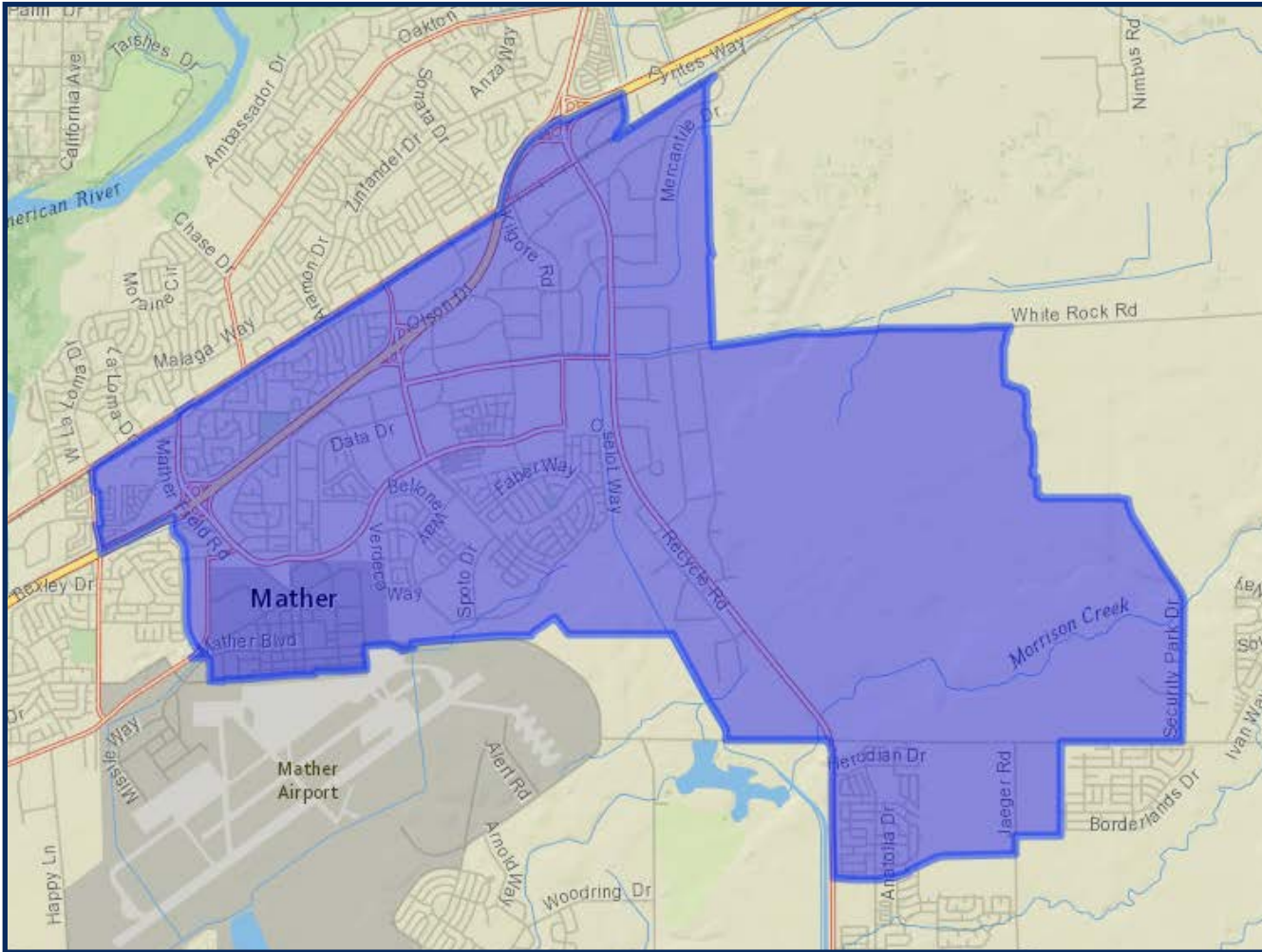
### DISTRICT 3



	2020 Count*	2019 CVAP*
Total	25,220	16,758
White	43.98%	47.81%
Black	10.77%	13.91%
Asian	12.51%	15.55%
Hispanic	23.32%	14.80%

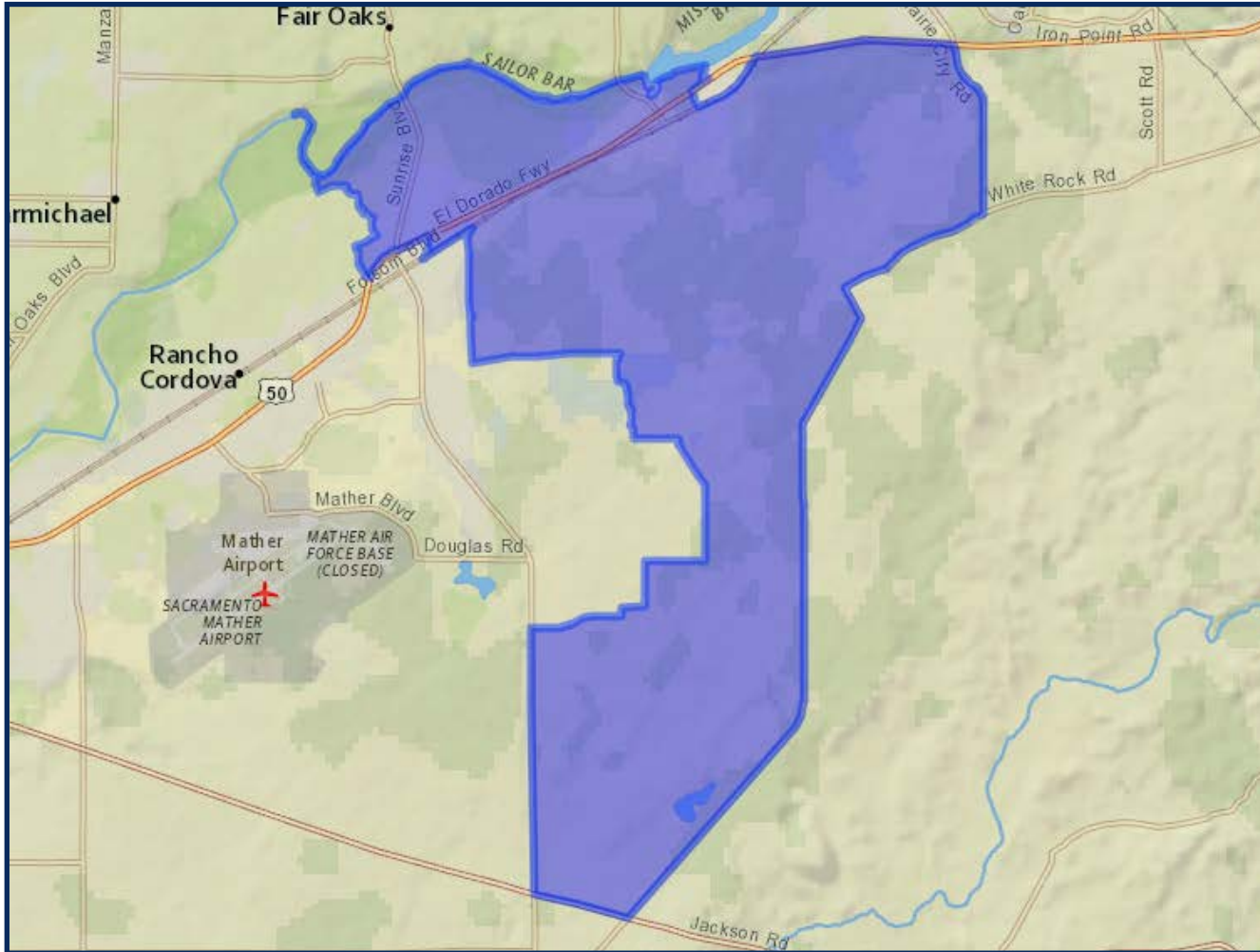
\*Adjusted for prisoner reallocation

## DISTRICT 4



	2020 Count*	2019 CVAP*
Total	25,801	14,646
White	39.10%	48.44%
Black	10.74%	15.31%
Asian	19.38%	14.82%
Hispanic	21.03%	14.55%

## DISTRICT 5



	2020 Count*	2019 CVAP*
Total	25,723	15,853
White	51.59%	61.96%
Black	5.27%	5.82%
Asian	21.58%	18.62%
Hispanic	12.93%	9.85%

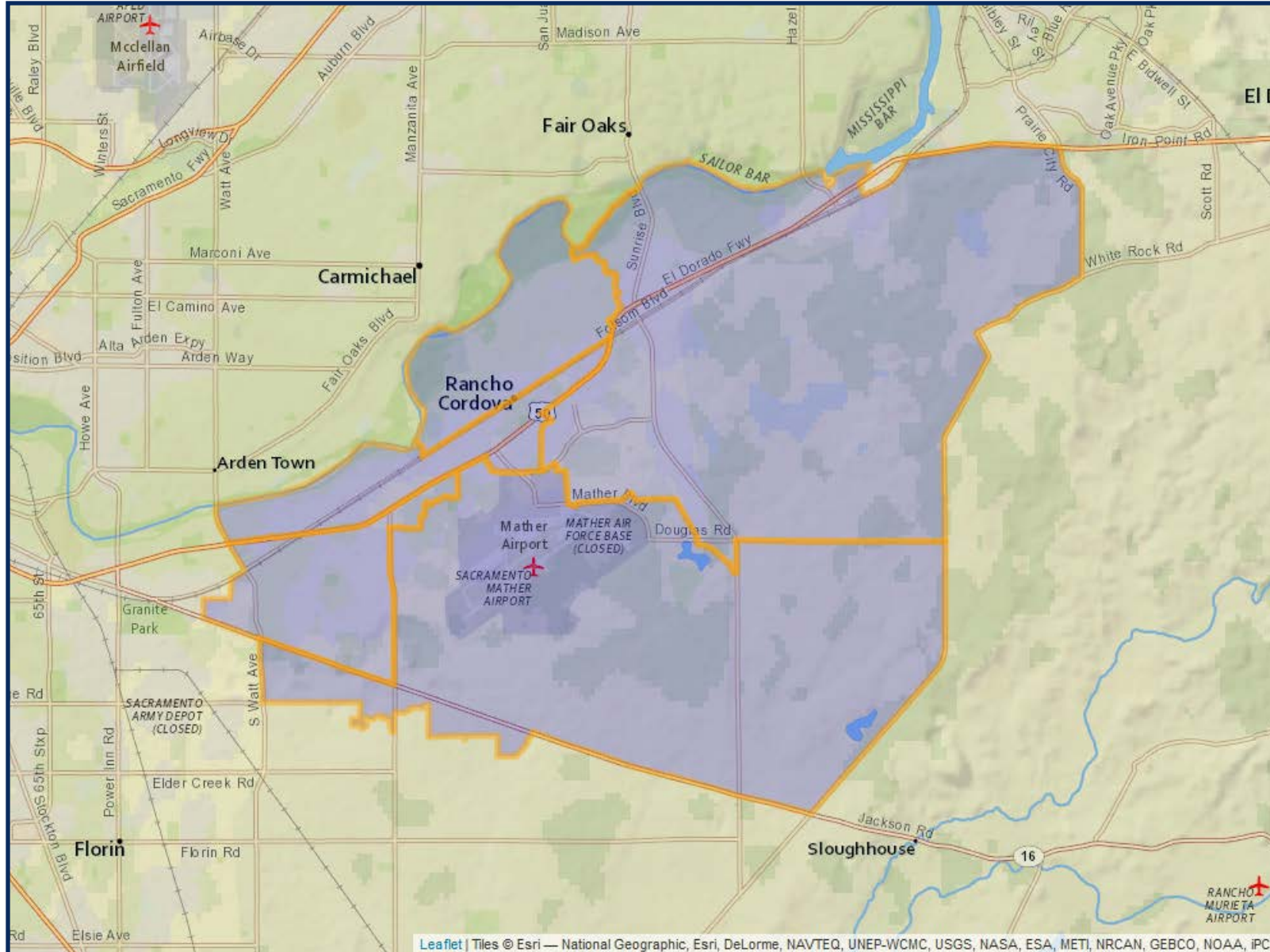
# DISTRICTING CRPD PUBLIC SUBMISSION I

	DISTRICT 1	DISTRICT 2	DISTRICT 3	DISTRICT 4	DISTRICT 5
2020 Census Count*	26,686	26,049	24,453	26,505	24,308
Deviation #	1,086	449	-1,147	905	-1,292
Deviation %	4.2%	1.8%	-4.5%	3.5%	-5.0%
2010 Census Count	25,650	24,321	18,881	19,567	22,550
2019 CVAP*	19,508	16,936	15,534	14,903	16,529
2010 CVAP	17,146	14,850	13,685	11,073	14,332

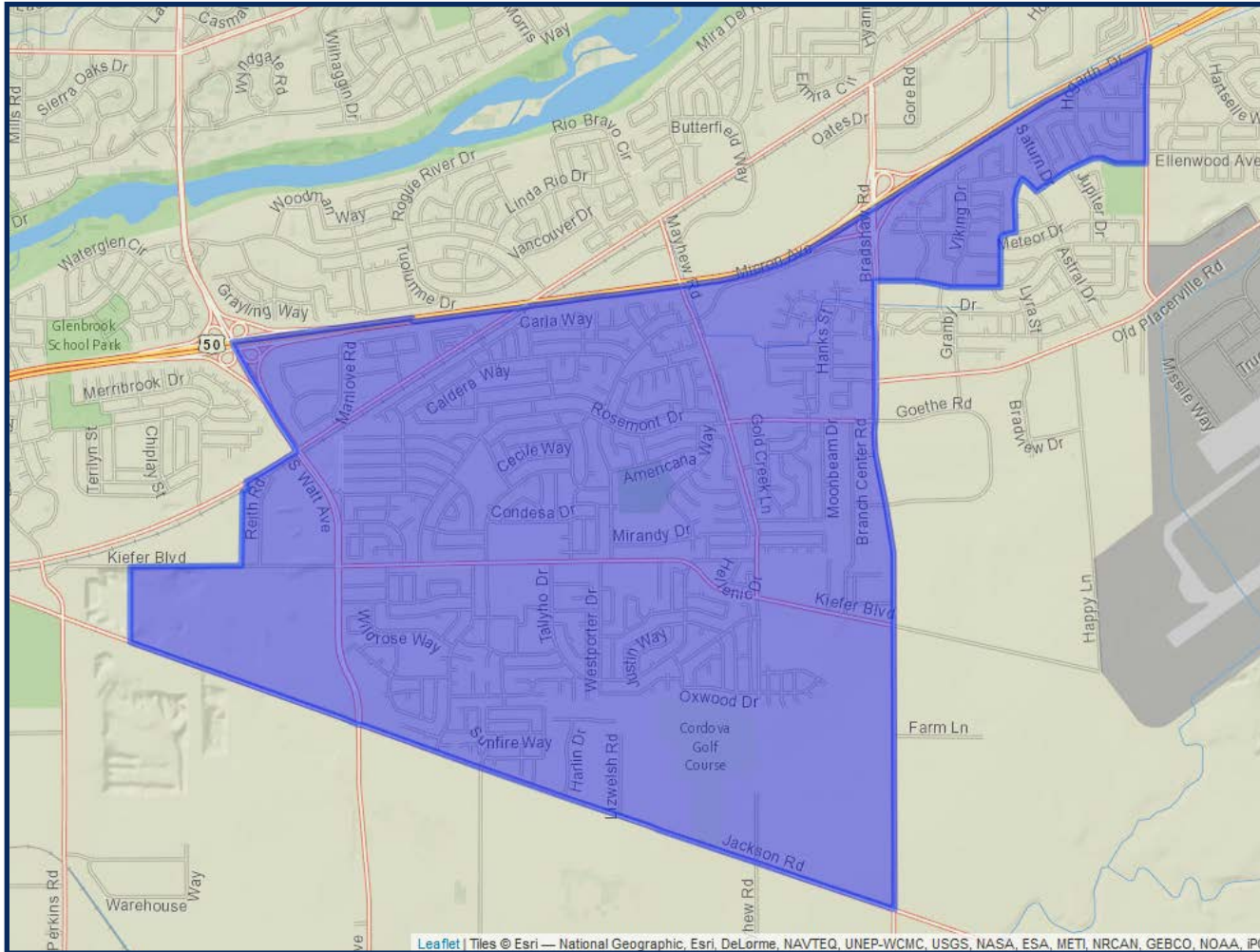


*\*Adjusted for prisoner reallocation*

# DISTRICTING CRPD PUBLIC SUBMISSION I



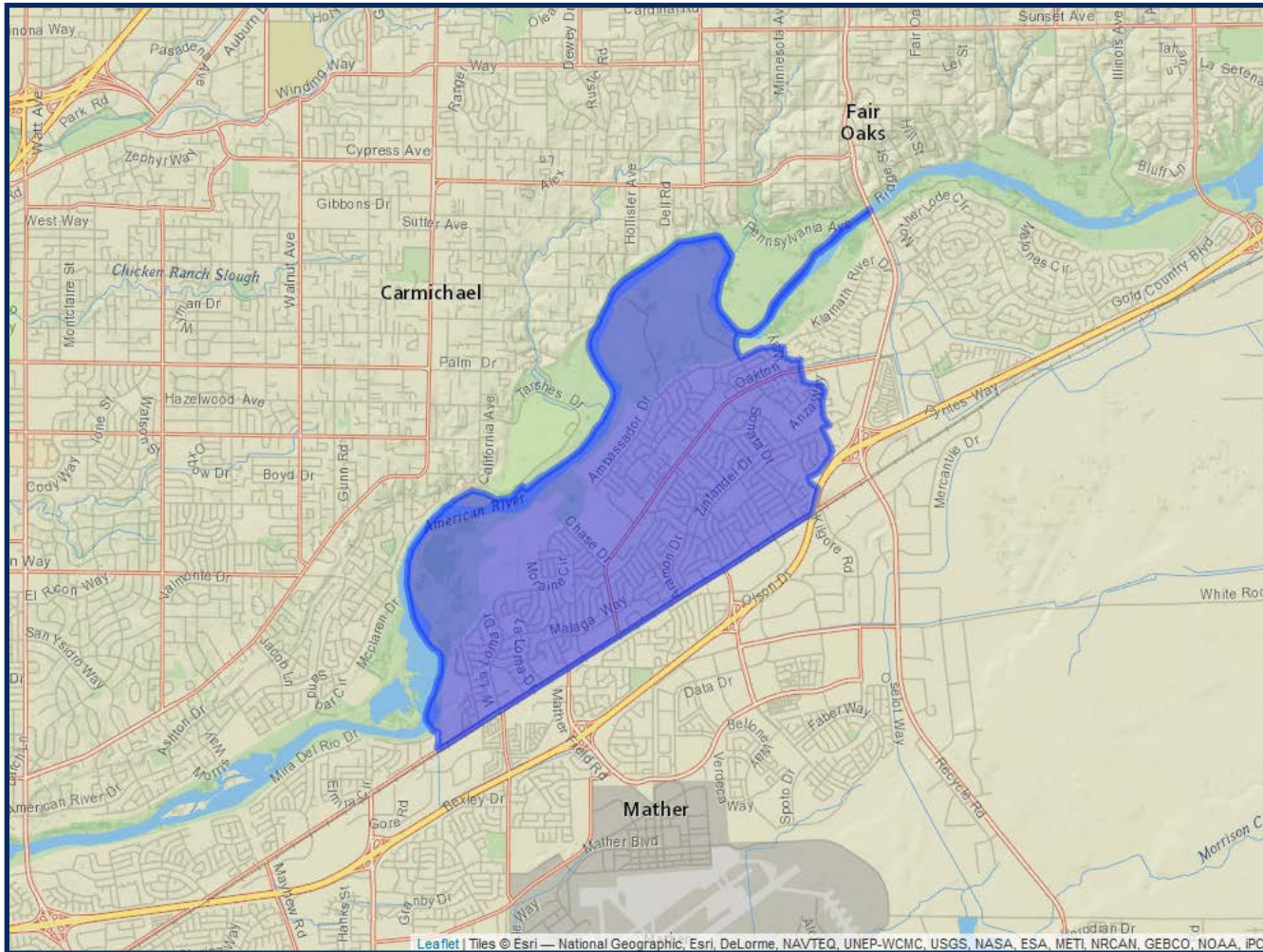
# DISTRICT 1



	2020 Count*	2019 CVAP*
Total	26,686	19,508
White	43.97%	50.64%
Black	11.85%	13.09%
Asian	11.53%	11.96%
Hispanic	23.50%	17.00%

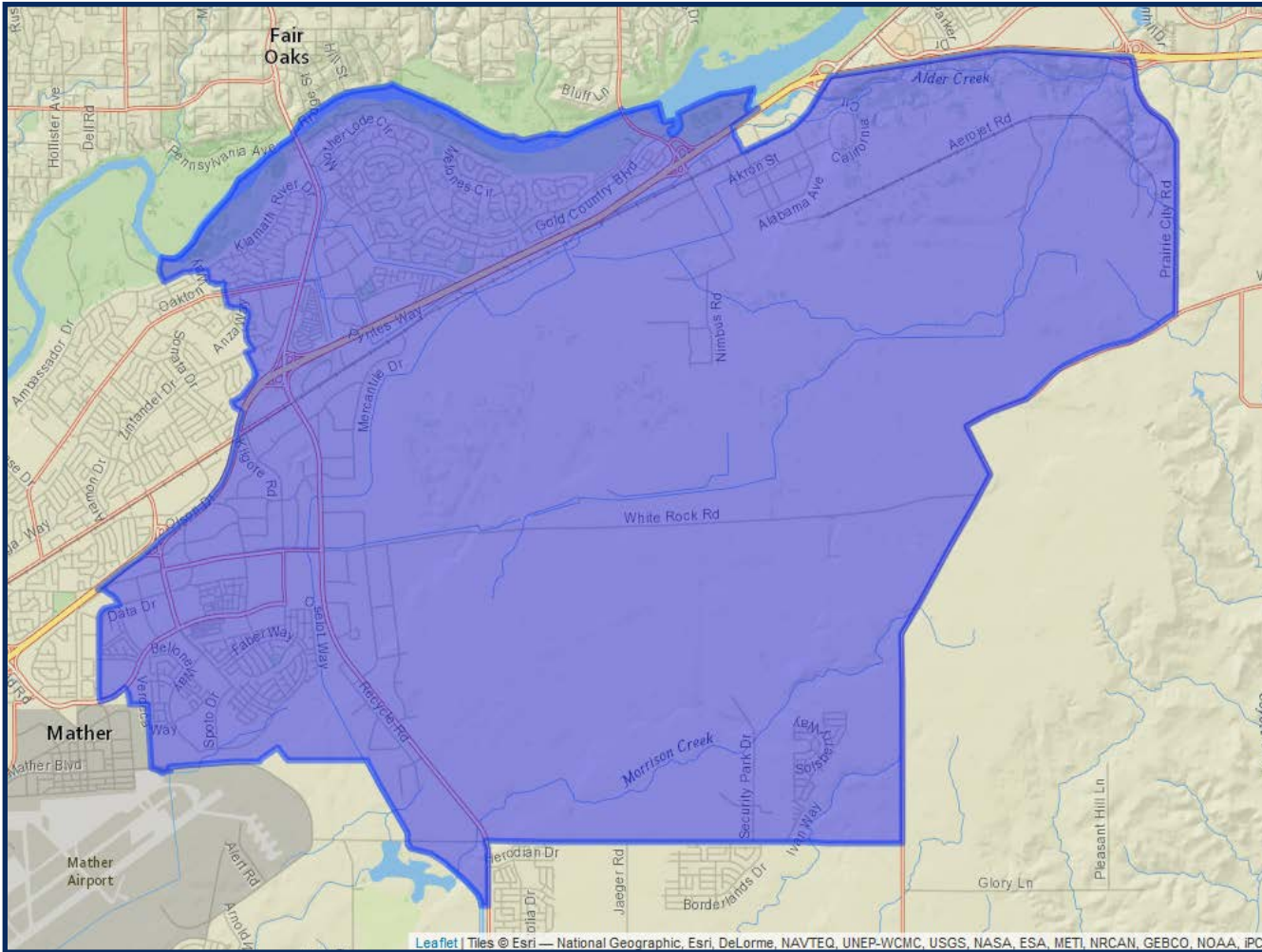


## DISTRICT 2



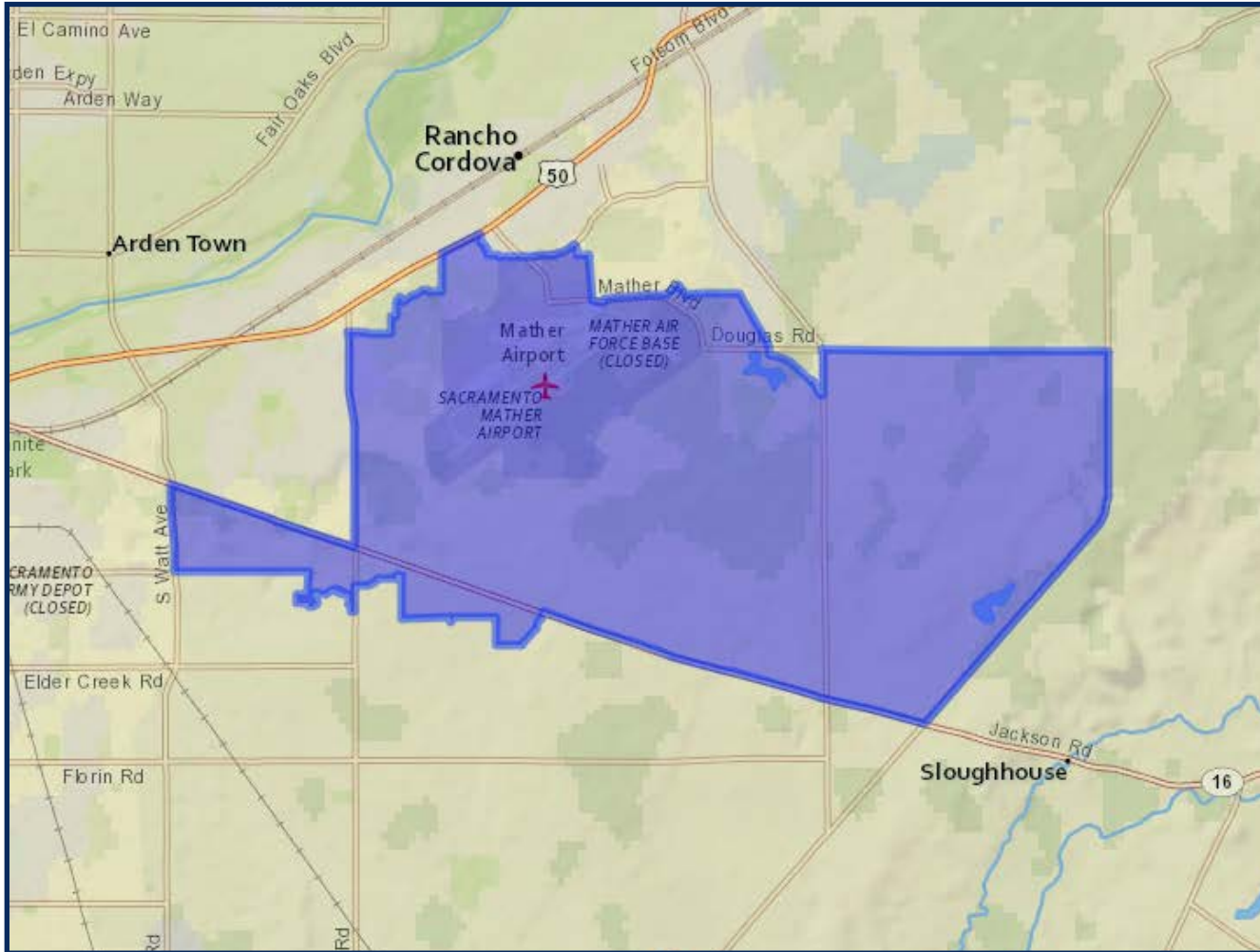
	2020 Count*	2019 CVAP*
Total	26,049	16,936
White	48.79%	65.13%
Black	8.58%	5.67%
Asian	7.73%	5.43%
Hispanic	25.59%	17.82%

### DISTRICT 3



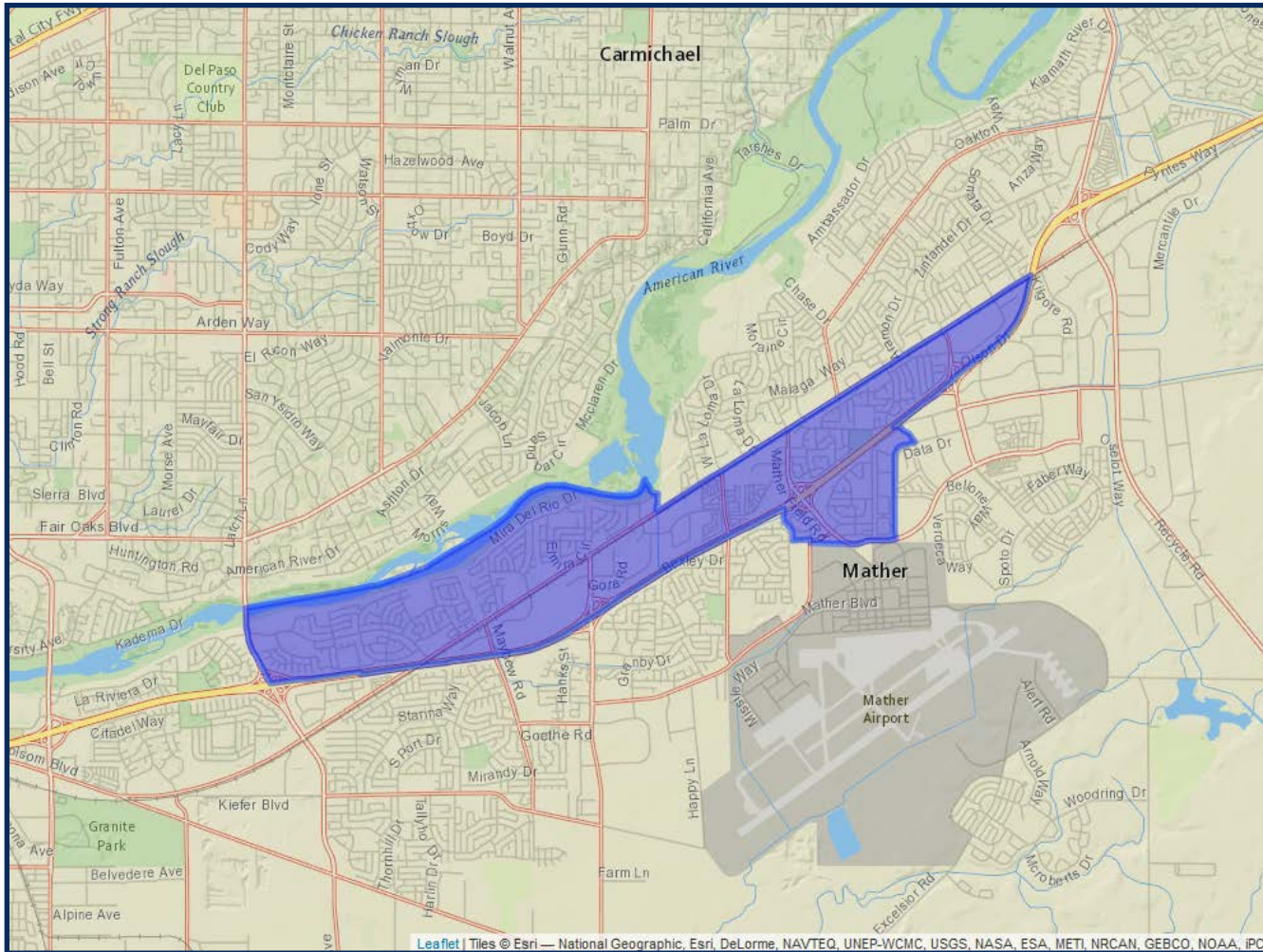
	2020 Count*	2019 CVAP*
Total	24,453	15,534
White	53.27%	62.86%
Black	5.19%	5.79%
Asian	20.31%	17.36%
Hispanic	12.83%	9.21%

## DISTRICT 4



	2020 Count*	2019 CVAP*
Total	26,505	14,903
White	42.44%	48.87%
Black	8.32%	10.09%
Asian	21.88%	21.11%
Hispanic	17.77%	13.91%

## DISTRICT 5



	2020 Count*	2019 CVAP*
Total	24,308	16,529
White	43.71%	51.09%
Black	11.68%	15.47%
Asian	9.27%	6.98%
Hispanic	25.23%	21.01%